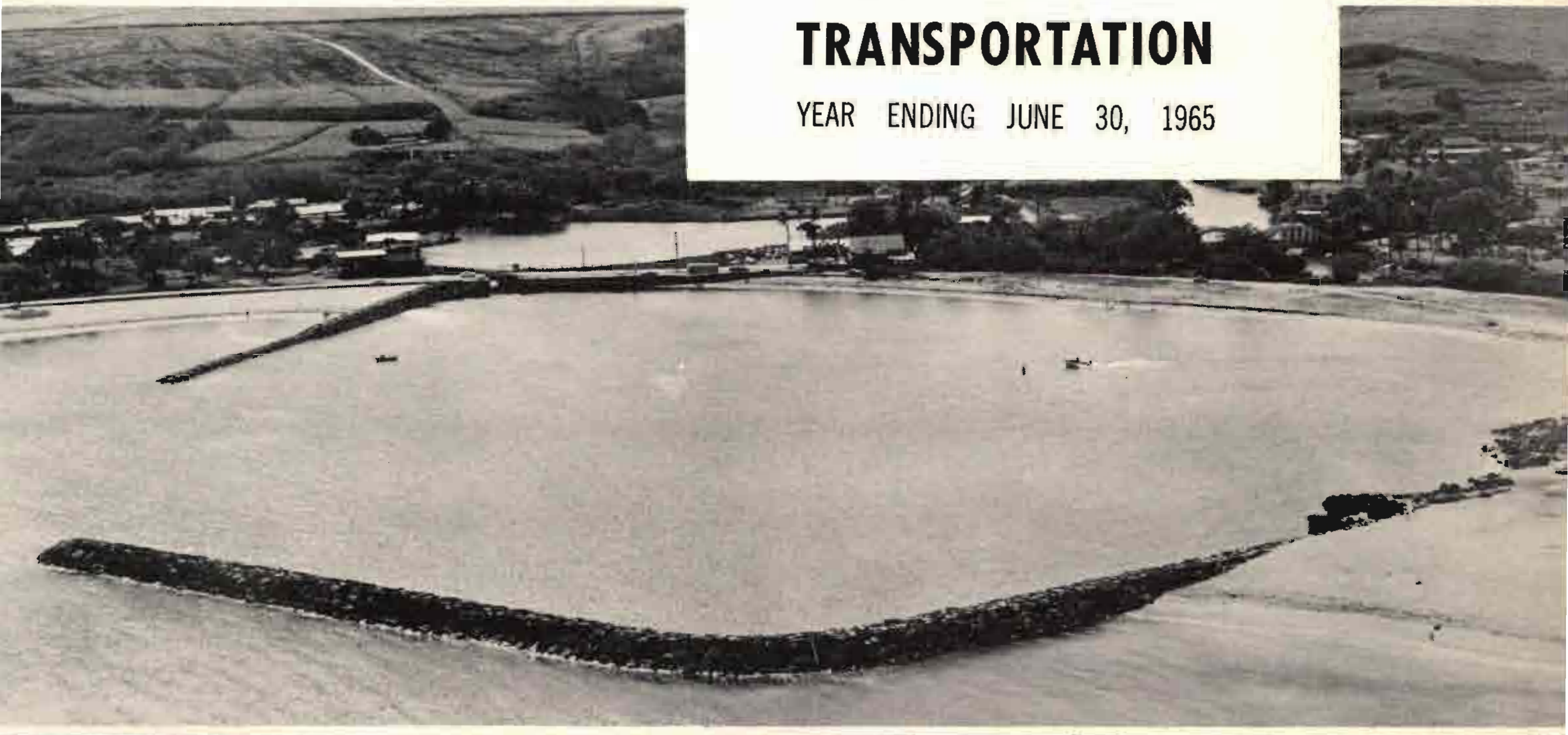


State of Hawaii
DEPARTMENT OF
TRANSPORTATION
YEAR ENDING JUNE 30, 1965





STATE OF HAWAII
DEPARTMENT OF TRANSPORTATION
869 PUNCHBOWL STREET
HONOLULU, HAWAII 96813

HONORABLE JOHN A. BURNS
Governor, State of Hawaii
Honolulu, Hawaii

Dear Governor Burns:

It is my pleasure to submit to you the annual report of the Department of Transportation, State of Hawaii, for the fiscal year ended June 30, 1965.

The accelerated rate of construction reported by each of our three program divisions reflects the continued growth of our State. Our future needs are being anticipated in long-range planning for airports, harbors and highways and an integrated transportation plan is being developed.

Dedication of the new jet runway at General Lyman Field in Hilo on March 6, 1965, marked the completion of the Airports Division's outstanding project of the year. The airport expansion has prepared Hilo to welcome direct flights of commercial jetliners from the Mainland. Another important event for the Airports Division was the start of construction of the new Kahului Terminal Building. The Maui airport handled a larger number of passengers than any other neighbor island airport in fiscal year 1964-65.

The improvements to the Passenger-Freight Terminal at Aloha Tower were completed with a dedication ceremony March 29, 1965. This \$4.5 million Harbors Division project has added greatly to the efficiency as well as the aesthetic aspect of the piers.

The outstanding achievement of the Highways Division was the completion on June 21, 1965, of the first segment of the Interstate Highway System, a one-mile concrete section of H-1 (Lunalilo Freeway) from First Avenue to Koko Head Avenue.

Honorable John A. Burns
Page 2

We anticipate a future of continued growth for Hawaii with confidence and the determination to provide a transportation system that will fully meet the needs of all our people.

Sincerely,

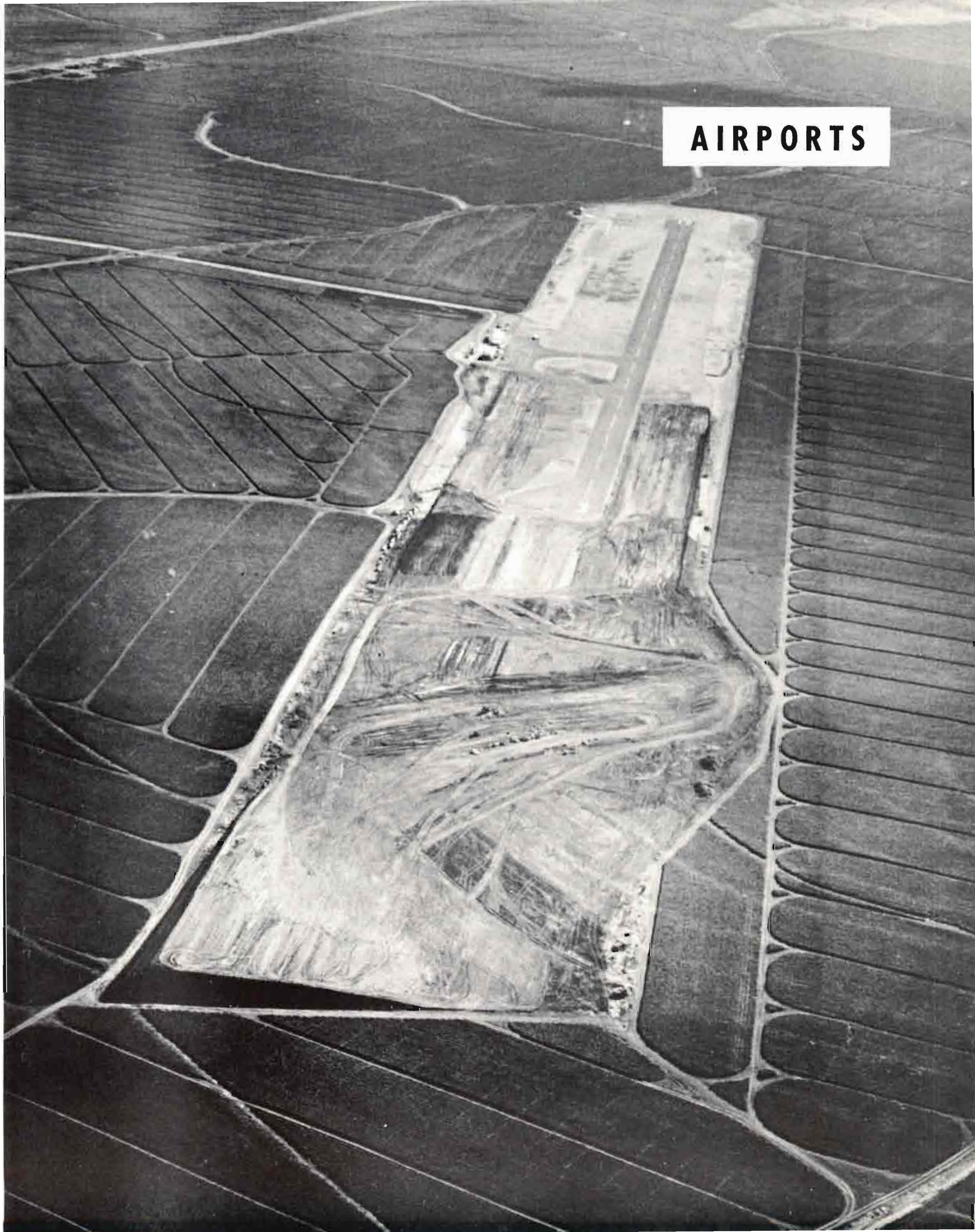
A handwritten signature in cursive script, reading "Fujio Matsuda". The signature is written in black ink and is positioned above the printed name and title.

FUJIO MATSUDA
Director

TABLE OF CONTENTS

	<u>Pages</u>
Letter of Transmittal	i - ii
Airports Division	1 - 4
Construction Contracts	5 - 10
Financial Statistics	11 - 12
Harbors Division	13 - 17
Construction Contracts	18 - 25
Financial Statistics	26 - 28
Highways Division	29 - 30
Construction Contracts	31 - 39
Financial Statistics	40 - 43
Departmental Staff	45 - 47
Administrative Directory	49
Department Offices	51 - 52
For Further Information	53
Description of Map	54
Map of Federal-Aid Highway System, State Airports and Harbors	Inside Back Cover

AIRPORTS



AIRPORTS DIVISION
1964-65

The Airports Division is responsible for the planning, operation and maintenance of all airport projects, including expansion and improvement of existing facilities as well as the establishment of new airports and facilities. It has jurisdiction and control of all State airways, airports and air navigation facilities and provides for the protection and promotion of safety in aeronautics. In conjunction with these functions it is mandated to encourage, foster and assist in the development of aeronautics.

The Division at present operates, manages and maintains 13 public civil airports throughout the Islands -- nine air carrier service airports and four general aviation airports.

To keep the airports in superior condition, over 200 employees of the Airports Division are charged with the administration, operation and maintenance of the facilities.

In terms of land area, this means 7,900 acres of runways, roads, landscaping and buildings spread over six islands.

Twenty-two million (22,000,000) square feet of asphalt and concrete surfacing are continuously groomed to assure safe and smooth aircraft operations on the runways, taxiways and aprons. Four and a half million (4,500,000) square feet of roads and parking areas must also be maintained by the employees of the Airports Division.

With increased passenger traffic, housekeeping of terminal buildings is a tremendous task covering 222,000 square feet of floor space. The remaining 277,000 square feet of building space is maintained by tenants such as airlines, the Federal Aviation Agency and concessionaires.

Fiscal year 1964-65 was a highly successful and creditable year for the Airports Division. The period was characterized by substantial increases in traffic and revenues at each major airport.

The movement of passengers and goods through the airports provides a good measure of the development of tourism, agriculture and industry in the State of Hawaii.

During the fiscal year ended June 30, 1965, the number of air passengers moving through Honolulu International Airport totaled nearly 3 million (2,920,078). Of this total, 1,768,339 were overseas passengers passing through John Rodgers Terminal -- an increase of 16.7% over fiscal year 1964. Inter-island passengers exceeded the one million mark for the first time -- 1,151,739, an increase of 13.4% over the previous year.

On the Orchid Isle, General Lyman Field handled 374,495 passengers, an increase of 14.0%. Passenger traffic at Kona Airport totaled 217,142 persons for a 16.6% growth over the prior fiscal year.

As a probable result of intensified resort development on Maui, Kahului Airport traffic increased 15.5% with 510,000 passengers passing through the old terminal building.

Although Lihue Airport had the smallest rise in number of passengers among the major inter-island terminals, the 488,623 persons carried there by the airlines represented a substantial growth of 12.0% over the prior year.

The traffic records set by overseas passengers in 1964-65 have exceeded the forecast projections made in 1960 for the year 1972 by 8.4%.

Total airport revenues and other income for the year were \$8,224,985 compared with \$5,596,765 the previous year, an increase of 29%.

The airport program has been and is expected to continue developing and expanding to meet the constantly increasing economic needs of the State. The continuing strength of those factors indicates a rise during the next decade which should exceed the substantial advances of the past years.

The outstanding construction project of the year was the completion of the second phase, \$2,114,878 contract for the extension of Runway 8-26 at General Lyman Field. On March 5, 1965, the project was accepted and impressive ceremonies were held the next day to formally dedicate the new jet runway. The runway was actually used by a jet airliner prior to the dedication when Pan American flew in its board of directors for an annual meeting in February. Third phase work to complete the facility was approved by the 1965 Session of the State Legislature. This includes completion of the parallel taxiway, taxiway lights and parking apron expansion.

On February 1, 1965, ground was broken for the construction of the new Kahului Airport Terminal Building. The \$834,500 project was partially financed by funds from the sale of Puunene Airport and will be completed in January, 1966. The building floor area is three times that of the old terminal, which was originally constructed in 1951 as a temporary facility.

Bids for the operation of the restaurant in the new terminal building at Kahului were opened on March 23, 1965, and the concession was awarded to Maui Skyport Service. Other concessions to be awarded include a gift shop and a flower shop.

Upon completion, the Kahului Terminal will be an outstanding example of beauty and efficiency in passenger convenience while still retaining the warmth of Maui's hospitality. Some of the features of the building will be an interior garden, "carousel" baggage handling system and large open lobby area.

As a part of the program to bring all airports up to the highest standards of safety and efficiency, work was started on June 14, 1965, at Lanai Airport to lengthen and widen the runway and to build a new aircraft parking apron and passenger terminal building. The runway will be enlarged from a pavement 3,700 feet long by 80 feet wide to 5,000 feet long by 50 feet wide. A new parking apron and terminal buildings are also being built to meet runway clearance criteria for the larger, faster type aircraft to be put into service between the islands.

At Hilo and Kahului, work was completed on fire and rescue equipment buildings to house State owned and Air Force aircraft fire fighting units. Both structures are nearly identical except that the Hilo building will house five units and the Kahului building four.

With the award on June 17, 1965, of a demolition contract, work began on the removal of another familiar landmark at Honolulu International Airport. Originally built by the U. S. Navy in World War II, the old terminal building withstood alterations, jet blast and insect infestation. By the end of September, 1965, only a few buildings housing freight and maintenance facilities will remain in the old terminal area.

The Airports Division faces several problems which have serious long range implications in the efficient operations of the State Airport System. Among them are needs for increased

revenue development, regulations of ground transportation, revisions to airport zoning and land use regulations, general aviation activities and facilities, and planning for new types of aircraft. The solutions to these and certain lesser problems are among the primary objectives of the Division for the year ahead.

PROJECTS STARTED PRIOR TO FISCAL YEAR
AND COMPLETED DURING FISCAL YEAR

OAHU

Honolulu International Airport

SO-64-1 - Resurfacing of portions of Runway 8-26 and
4L-22R and Taxiways B, D and G.

Contract amount, \$263,979.06; completed July 14, 1964.

HAWAII

General Lyman Field

FAAP Project No. 9-52-008-C307 - Completion of extension
and reconstruction of Runway 8-26.

Contract amount, \$2,114,878.35; completed March 5, 1965.

PROJECTS STARTED AND COMPLETED
DURING FISCAL YEAR

OAHU

Honolulu International Airport

HIA-6-64 - Air Conditioning of the fourth floor of the
Administration Building.

Contract amount, \$7,370.00; completed March 4, 1965.

HAWAII

General Lyman Field

FAAP Project No. 9-52-008-C508 - Construction of Fire
and Rescue Equipment Building.

Contract amount, \$30,077.56; completed March 5, 1965.

PROJECTS STARTED DURING FISCAL YEAR
AND NOT COMPLETED AT END OF FISCAL YEAR

OAHU

Honolulu International Airport

O-88, Part I - Construction of additional roads & utilities.

Contract amount, \$114,866.95

O-88, Parts II and III - Clearing and grubbing overseas maintenance area, relocation of hangars and Construction of concession building and Visitors Information booths.

Contract amount, \$66,999.00

S0-65-11 - Demolishing and removal of old terminal building.

Contract amount, \$13,700.00

O-65-3 - Miscellaneous alterations and repairs to roads and Reconstruction of taxiway and shoulders.

Contract amount, \$91,165.93

S0-65-2 - Painting of inter-island terminal buildings, air conditioning central tower and PAM hangars.

Contract amount, \$47,459.00

HAWAII

General Lyman Field

SH-65-8 - Re-roofing of passenger terminal buildings.

Contract amount, \$19,154.00

SH-65-10 - Replacement of the public address system.

Contract amount, \$3,907.47

Kamuela Airport

SH-65-7 - Seal coating and striping of Runway.

Contract amount, \$22,036.00

MAUI

Kahului Airport

M-66 - Construction of new terminal building.

Contract amount, \$798,653.00

FAAP Project No. 9-52-012-C503 - Construction of Fire and Rescue Equipment Building.

Contract amount, \$27,229.00

Lanai Airport

FAAP Project No. 9-52-004-C502 - Runway extension from 3,700 feet long by 80 feet wide to 5,000 feet long by 150 feet wide; new aircraft parking apron and passenger terminal building.

Contract amount, \$802,332.50

KAUAI

Lihue Airport

K-35, SK-65-9 - Construction of light plane taxiway and realignment of entrance road, resurfacing of taxiway and slurry sealing of apron.

Contract amount, \$48,639.00

AIRPORT CONSTRUCTION CONTRACTS

<u>Project and Location</u>	<u>Contractor and Date</u>	<u>Amount</u>
Fire and Rescue Equipment Building, General Lyman Field, FAAP Project No. 9-52-008-C508	S. K. Oda, Ltd. July 27, 1964	\$ 32,500.00
Fire and Rescue Equipment Building, Kahului Airport, FAAP Project No. 9-52-012-C503	F & M Contractors, Inc. July 27, 1964	29,500.00
Air conditioning of the fourth floor of the Administra- tion Building, Honolulu Inter- national Airport, Project No. HIA-6-64	Air Engineering Co., Inc. December 15, 1964	7,740.00
New terminal building, Kahului Airport, Project No. M-66	F & M Contractors, Inc. December 3, 1964	834,500.00
Clearing and grubbing overseas maintenance area, relocating hangars and con- struction of con- cession building and Visitor Information booths, Honolulu International Airport, Project O-88, Parts II and III	Podmore Construction, Inc. December 29, 1964	70,999.00
Additional roads and utilities, Honolulu International Airport, Project No. O-88, Part I	Royal Contracting Co., Ltd. December 29, 1964	120,866.95

<u>Project and Location</u>	<u>Contractor and Date</u>	<u>Amount</u>
Runway extension, Lanai Airport, FAAP Project No. 9-52-004-C502	Fong Construction April 13, 1965	\$ 842,670.00
Re-roofing of the passenger terminal buildings, General Lyman Field, Project No. SH-65-8	Honolulu Roofing Co., Ltd. May 27, 1965	19,600.00
Seal coating and striping, Kamuela Airport, Project No. SH-65-7	James W. Glover, Ltd. June 9, 1965	23,150.00
Replacement of the public address system, General Lyman Field, Project No. SH-65-10	American Factors, Ltd. June 16, 1965	4,100.47
Demolition and re- moval of the old terminal building, Honolulu Inter- national Airport, Project No. SO-65-11	Tajiri Lumber June 17, 1965	15,000.00
Miscellaneous altera- tions and repairs to roads and reconstruct taxiway and shoulders, Honolulu Inter- national Airport, Project No. O-65-3	Capitol Builders, Ltd. June 17, 1965	110,000.00
Painting of Inter- Island Terminal Buildings, air conditioning of control Tower and PAM Hangars, Honolulu International Airport, Project No. SO-65-2	Walter M. Inoue June 22, 1965	50,000.00

<u>Project and Location</u>	<u>Contractor and Date</u>	<u>Amount</u>
Construction of light plane taxiway and realignment of Entrance Road, resurfacing of taxiway and slurry sealing of Apron, Lihue Airport, Project No. K-35 and SK-65-9	Richard K. W. Tom, Inc. June 24, 1965	\$ 52,000.00
	TOTAL	<hr/> \$2,212,626.42

AIRPORTS DIVISION
FINANCIAL STATISTICS
Combined Balance Sheet - June 30, 1965 and 1964

	<u>- J U N E</u>	<u>3 0 -</u>
	<u>1964</u>	<u>1965</u>
<u>ASSETS</u>		
CASH:		
With Director of Finance, State of Hawaii	\$ 5,162,288	\$ 6,155,448
Time Certificates of Deposits	329,000	1,370,000
On Hand, Undeposited	3,853	35,206
With Fiscal Agents	322,522	454,955
Total Cash	<u>5,817,663</u>	<u>8,015,609</u>
RECEIVABLES:		
Accounts, net	615,765	700,431
Aviation Fuel Taxes	132,763	163,483
Recoverable Costs from U. S. Government for Grants-In-Aid	-	-
	<u>748,528</u>	<u>863,914</u>
DUE FROM OTHER FUNDS	652,703	592,194
DEPOSITS	1,500	1,500
INVENTORY, MATERIALS & SUPPLIES	49,463	57,722
AVIATION PROPERTIES		
Land	5,421,038	5,424,093
Airport Improvements & Buildings	7,961,068	37,286,145
Equipment & Motor Vehicles	728,300	725,491
Construction in Progress	31,396,111	4,405,116
	<u>45,506,517</u>	<u>47,840,845</u>
AMOUNT AVAILABLE AND TO BE PROVIDED FOR RETIREMENT OF BONDS AND PAYMENT OF INTEREST		
	36,311,724	35,221,771
BONDS AUTHORIZED, UNISSUED	3,000,000	3,000,000
TOTAL ASSETS	<u>\$92,108,098</u>	<u>\$95,593,555</u>
<u>LIABILITIES, RESERVES AND FUND BALANCES</u>		
LIABILITIES:		
Vouchers and Contract Payables	\$ 176,258	\$ 50,818
Contracts Payable - Retained Percentage	123,772	35,886
Interest Payable - Current	322,414	309,095
Tenants' Deposits	36,326	37,547
Accrued Vacation & Sick Leave	179,231	218,906
Due to Other Funds	627,399	568,743
Premium Payable on Redemption of Bonds	-	1,320
Bonds Payable	-	66,000
	<u>1,465,400</u>	<u>1,287,315</u>
LONG-TERM DEBT		
Bonds Payable	22,047,953	21,905,693
Interest Payable - Future Years	14,283,771	13,316,078
INVESTMENT IN AVIATION PROPERTIES	45,506,517	47,840,845
RESERVE FOR ENCUMBRANCES	181,498	1,631,714
RESERVE FOR REPAIRS	-	4,404
FUND BALANCES	<u>8,622,959</u>	<u>9,607,506</u>
TOTAL LIABILITIES, RESERVES AND FUND BALANCES	<u>\$92,108,098</u>	<u>\$95,593,555</u>

AIRPORTS DIVISION
FINANCIAL STATISTICS
Combined Analysis of Changes in Fund Balances
Fiscal Years Ending June 30, 1964 and 1965

	Fiscal Year	
	1964	1965
FUND BALANCES, JULY 1, 1963 and 1964		
Revenue Fund	\$ 710,792	\$ 761,927
Aviation Bond Fund	72,500	214,694
Aviation Bond Reserve Fund	1,206,857	1,238,154
Aviation Operation & Maintenance Fund	262,871	816,486
Aviation Renewal & Replacement Fund	411,668	411,168
Series A Construction Fund	458,044	549,780
Airport Bond Fund, 1949 Authority ^{1/}	3,000,000	3,000,000
Airport Bond Fund, 1961 Authority	20,553	12,783
Capital Improvements Fund	<u>2,161,917</u>	<u>1,617,967</u>
	8,305,202	8,622,959
Add Reimbursement for Damages	-	1,000
Add Reserve for Encumbrances, prior years	766,966	181,498
Deduct allowance for Doubtful Accounts for Prior Year	<u>(24,798)</u>	<u>-</u>
	<u>\$ 9,047,370</u>	<u>\$ 8,805,457</u>
RECEIPTS:		
Aviation Fuel Taxes	\$ 1,394,986	\$ 1,652,334
Federal Grants in Aid	268,265	2,097,165
Airport Revenues	1,833,541	1,935,580
Airport Use Charges	1,821,460	1,599,805
Interest Earned	80,294	70,585
Concessionaires' Contributions	-	-
Legislative Appropriations, State General Obligation Bond Fund	259,560	869,533
Transfers From Other Funds	<u>5,285,333</u>	<u>5,431,830</u>
	<u>\$10,943,439</u>	<u>\$13,656,832</u>
EXPENDITURES:		
Transfers to Other Funds	\$ 5,321,333	\$ 5,431,830
Construction Costs	2,455,625	2,349,808
Unimproved Land	-	3,056
Operating Expenses	2,774,751	2,641,529
Equipment and Motor Vehicles	50,221	22,685
Principal and Interest Payments Revenue Bonds	-	198,900
State General Obligation Bonds	<u>584,422</u>	<u>575,261</u>
	<u>\$11,186,352</u>	<u>\$11,223,069</u>
DEDUCT RESERVE FOR ENCUMBRANCES	\$ 181,498	\$ 1,631,714
FUND BALANCES, JUNE 30, 1964 and 1965		
Revenue Fund	\$ 761,927	\$ 2,782,992
Aviation Bond Fund	214,694	617,338
Aviation Bond Reserve Fund	1,238,154	1,276,739
Aviation Operation & Maintenance Fund	816,486	(76,972)
Aviation Renewal & Replacement Fund	411,168	424,001
Series A Construction Account	549,780	360,795
Airport Bond Fund, 1949 Authority ^{1/}	3,000,000	3,000,000
Airport Bond Fund, 1961 Authority	12,783	8,695
Capital Improvements Fund	<u>1,617,967</u>	<u>1,213,918</u>
	<u>\$ 8,622,959</u>	<u>\$ 9,607,506</u>

^{1/} Legislative Authorization Only
Bonds Unissued, Act 381, SLH 1949

ADMINISTRATIVE DIRECTORY

1964-65

Director of Transportation Fujio Matsuda
Deputy Director of Transportation. Kaipo Francis Kauka

Staff Officers

Administrative Services Officer. John Miki
Planning and Programs Officer. Munny Y. M. Lee
Special Projects Engineer. Mrs. Mae Nishioka
Office Services Supervisor Mrs. Bernice Rose

Division Chiefs

Airports A. P. Storrs, retired in December and
vacancy filled in March by O. A. Byrne
Harbors Melvin E. Lepine
Highways Albert C. Zane

District Officers

Oahu

Airport Manager Gilbert L. Livingston
Harbor Master. Eugene L. McManus
Highway Construction Engineer Lorenzo C. Fruto
Highway Maintenance Engineer Calvin A. Tottori

Hawaii

Airport Manager O. A. Byrne, succeeded in
May by John W. Cooper
Harbor Master William R. Wickland
Highways District Engineer Charles L. Schuster

Maui

Airport Manager William Neilson
Harbor Master Erich H. Stein, succeeded in
May by Finn Anonsen
Highways District Engineer Hideo Hayashi

Kauai

Airport Manager John W. Cooper, until May
Harbor Master William S. Latham
Highways District Engineer Fred L. Schumacher

DEPARTMENT OFFICES

Departmental Administration Offices

Director
Department of Transportation
State of Hawaii
869 Punchbowl Street
Honolulu, Hawaii 96813
Phone - 50-511

Airports Offices

Airport Manager, Hawaii
Department of Transportation
State of Hawaii
General Lyman Field
Hilo, Hawaii 96720
Phone - 3-100

Airport Manager, Oahu
Department of Transportation
State of Hawaii
Honolulu International Airport
Honolulu, Hawaii 96819
Phone - 855-981

Airport Manager, Maui
Department of Transportation
State of Hawaii
Kahului Airport
Kahului, Hawaii 96732
Phone - 729-302

Airport Manager, Kauai
Department of Transportation
State of Hawaii
Lihue Airport
Lihue, Hawaii 96766
Phone 26-601

Harbors Offices

Harbor Master, Hawaii
Department of Transportation
State of Hawaii
Pier 1, Hilo
P. O. Box 1555
Hilo, Hawaii 96720
Phone - 3-957

Harbor Master, Oahu
Department of Transportation
State of Hawaii
700 Fort Street
P. O. Box 397
Honolulu, Hawaii 96809
Phone - 59-372 or 501-461

Harbor Master, Maui
Department of Transportation
State of Hawaii
Pier 2, Kahului
P. O. Box 201
Kahului, Hawaii 96732
Phone - 76-051

Harbor Master, Kauai
Department of Transportation
State of Hawaii
Nawiliwili, Kauai
P. O. Box 821
Lihue, Hawaii 96766
Phone - 2-901

Highways Offices

District Engineer, Hawaii
Department of Transportation
State of Hawaii
50 Makaala Street
P. O. Box 403
Hilo, Hawaii
Phone - 53-347

District Engineer, Oahu
Department of Transportation
State of Hawaii
721 Kelikoi Street
Honolulu, Hawaii 96813
Phone - 50-511

District Engineer, Maui
Department of Transportation
State of Hawaii
962 Keaoolu Street
Kahului Kai (NASKA)
P. O. Box 700
Kahului, Hawaii 96732
Phone - 75-061 or 75-062

District Engineer, Kauai
Department of Transportation
State of Hawaii
New Court House Building
Corner of Umi & Hardy Streets
P. O. Box 287
Lihue, Hawaii 96766
Phone - 2-726

FOR FURTHER INFORMATION

The Annual Report of the State Department of Transportation is intended to provide an over-all view of the Department's activities.

The three major divisions of the department and their various branches also issue periodical or special reports of a more technical nature.

Persons interested in a special phase of the department's operations are invited to direct specific requests for information to the division concerned.

Copies of major reports are usually available for examination at the Public Archives, the University of Hawaii Library, the State of Hawaii Library, the Municipal Reference Library, and the County libraries of Hawaii, Maui and Kauai.

Persons interested in details of the department's tentative long-range construction program are referred to the Governor's Capital Improvements Program.

DESCRIPTION OF MAP

The map at right depicts the general locations of the Federal-aid Highway System in Hawaii and of the State Department of Transportation airports and harbors.

FEDERAL-AID HIGHWAY SYSTEM

The colored lines on the map show the Federal-aid Highway Primary (including Interstate) and Secondary systems, consisting of the designated principal network of highways on each of the major islands.

The solid colored lines show the approximate 570 miles which have been constructed by the State with the help of Federal funds and which were being maintained by the Highways Division on June 30, 1965.

The remainder of the system consists of proposed Federal-State construction, certain existing county road sections and certain National Park and military roads.

AIRPORTS

The nine commercial airports under the jurisdiction of the Airports Division include Lihue Airport on Kauai, Honolulu International Airport on Oahu, Molokai Airport on Molokai, Lanai Airport on Lanai, Hana and Kahului airports on Maui, and Kamuela and Kona airports and General Lyman Field (Hilo) on Hawaii.

The four general aviation airports administered by the Airports Division include Port Allen Airport on Kauai, Dillingham Field on Oahu, Kalaupapa Airport on Molokai, and Upolu Airport on Hawaii.

HARBORS

The six commercial deepwater harbors under jurisdiction of the Harbors Division are located at Nawiliwili and Port Allen on Kauai, at Honolulu Harbor on Oahu, at Kahului on Maui, and at Hilo and Kawaihae on Hawaii.

Kewalo Basin is a light-draft commercial harbor.

The Harbors Division administers barge landings at Kalaupapa and Kaunakakai on Molokai, and at Kawaihae and Kailua-Kona on Hawaii.

The Harbors Division's 14 small boat harbors are located as follows: at Kikiaola, Port Allen and Kukuiula on Kauai; at Pokai Bay, Keehi Lagoon, Ala Wai Harbor and Heeia-Kea on Oahu; at Manele Bay on Lanai; at Maalaea and Lahaina on Maui; and at Kawaihae (where there are two small boat harbors), on the Wailoa River and at Kailua-Kona, all on Hawaii.