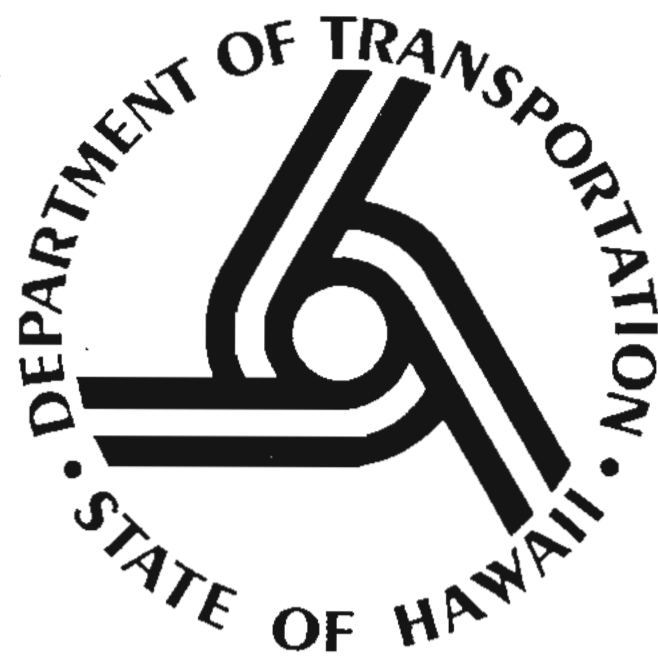
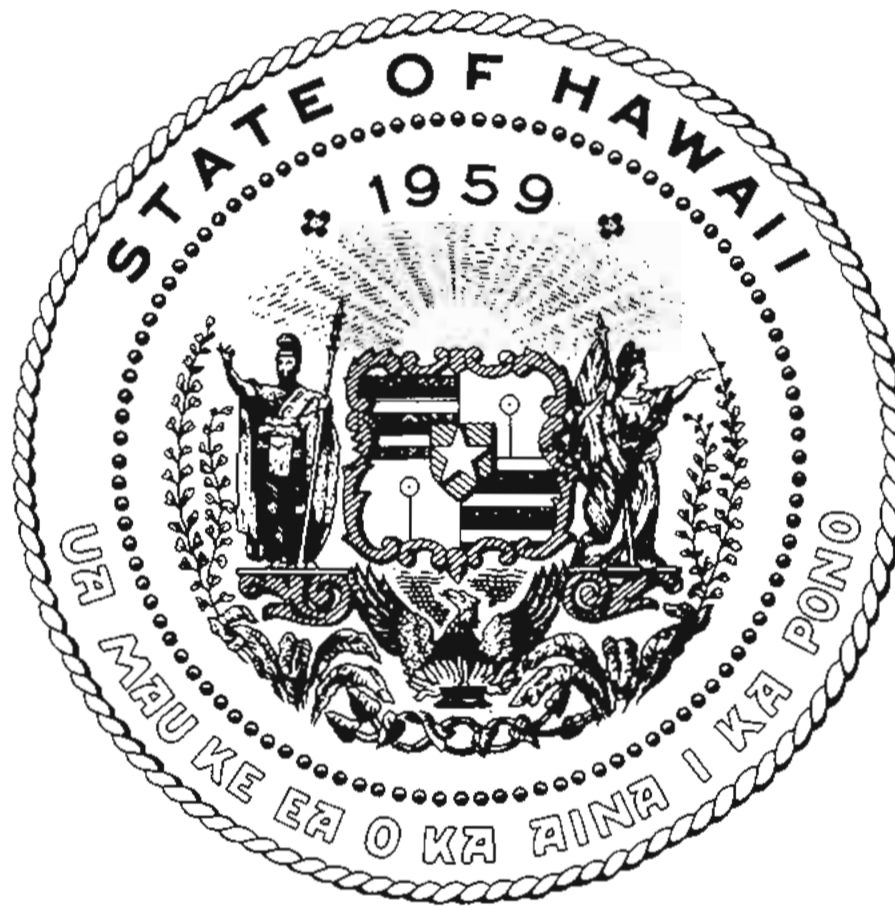


STATE OF HAWAII

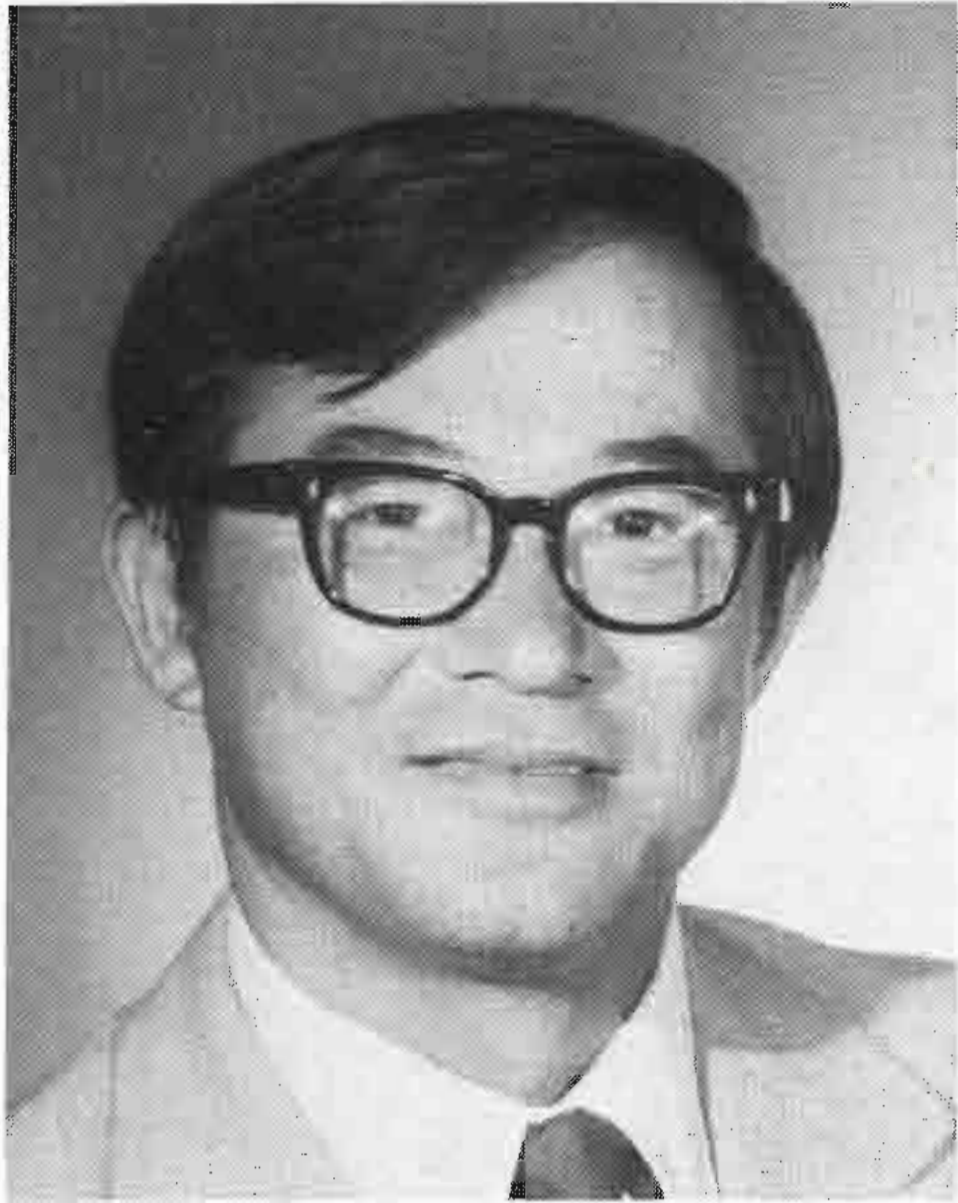


**DEPARTMENT  
OF  
TRANSPORTATION**



**REPORT  
TO THE GOVERNOR  
Fiscal Year 1981**

STATE OF HAWAII  
DEPARTMENT OF TRANSPORTATION  
869 Punchbowl Street  
Honolulu, Hawaii 96813



**DR. RYOKICHI HIGASHIONNA  
STATE OF HAWAII  
DIRECTOR  
DEPARTMENT OF TRANSPORTATION**

**REPORT TO THE GOVERNOR**

I am honored to submit this Annual Report for the fiscal year 1981 showing the accomplishments of the Department of Transportation in its efforts to meet the preferred future goals of the Hawaii State Plan.

The Airports, Harbors, and Highways Divisions have directed their efforts to providing a balanced multi-modal transportation system to serve the mobility needs of our citizens and the planned economic and growth objectives of the Hawaii State Plan.

The Department of Transportation has adopted management policies to confront the harsh economic realities of the eighties without sacrificing service to the public. The department continues to look to the future and is continually updating its long-range modal plans to insure conformance to the Hawaii State Plan.

In our efforts to meet the transport demands of the people of Hawaii, we have continued to seek the broadest possible spectrum of public input.

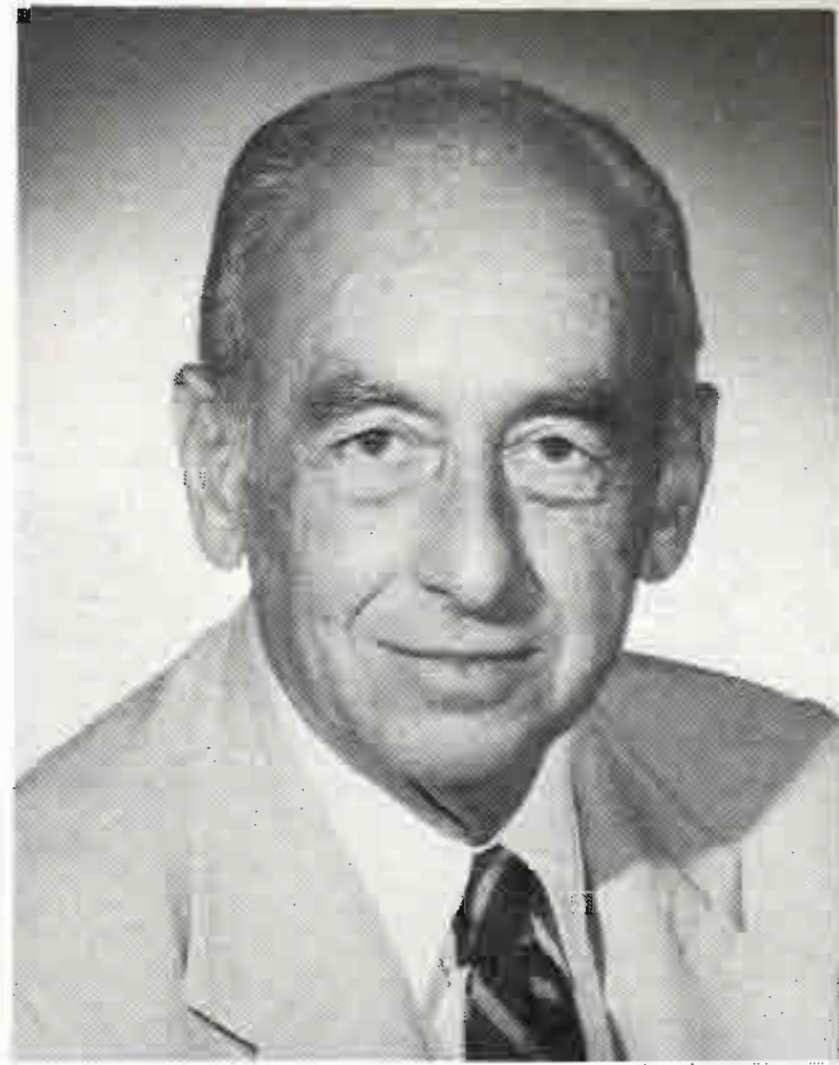
*Ryokichi Higashionna*

Ryokichi Higashionna  
Director of Transportation

# DEPUTY DIRECTORS

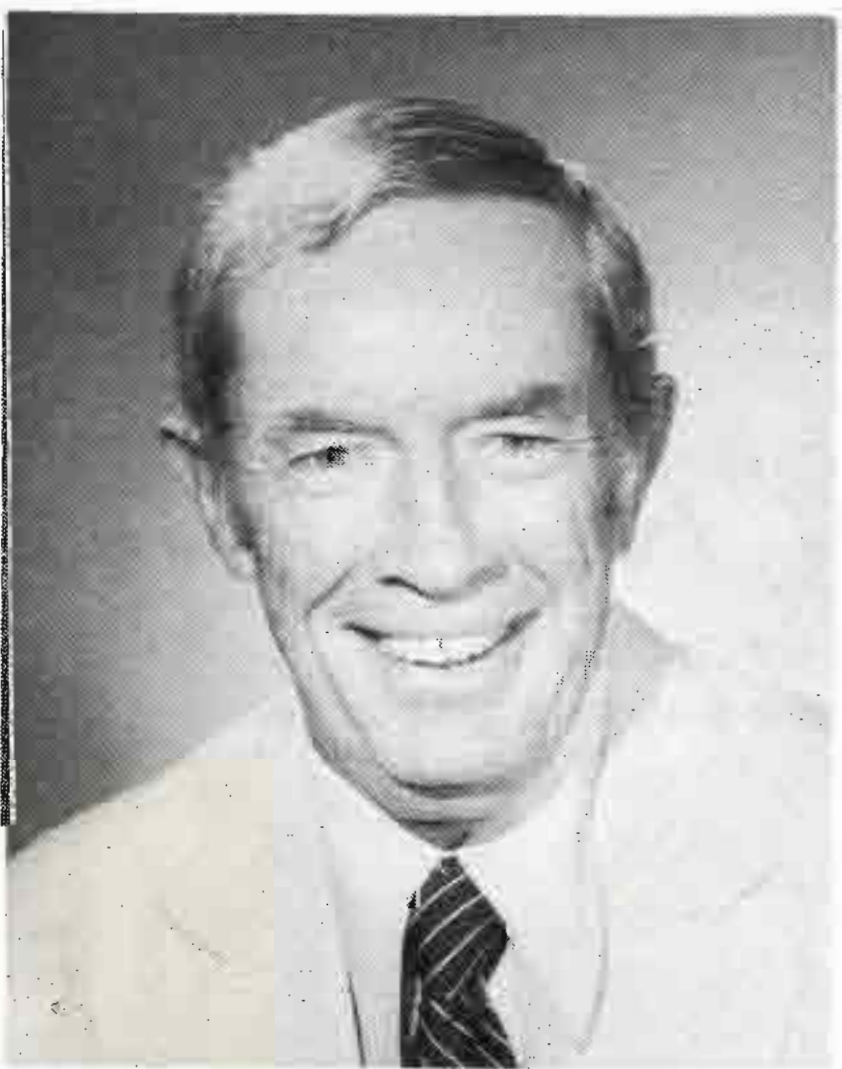


**JACK K. SUWA**  
**DEPUTY DIRECTOR**  
**STAFF SERVICES**

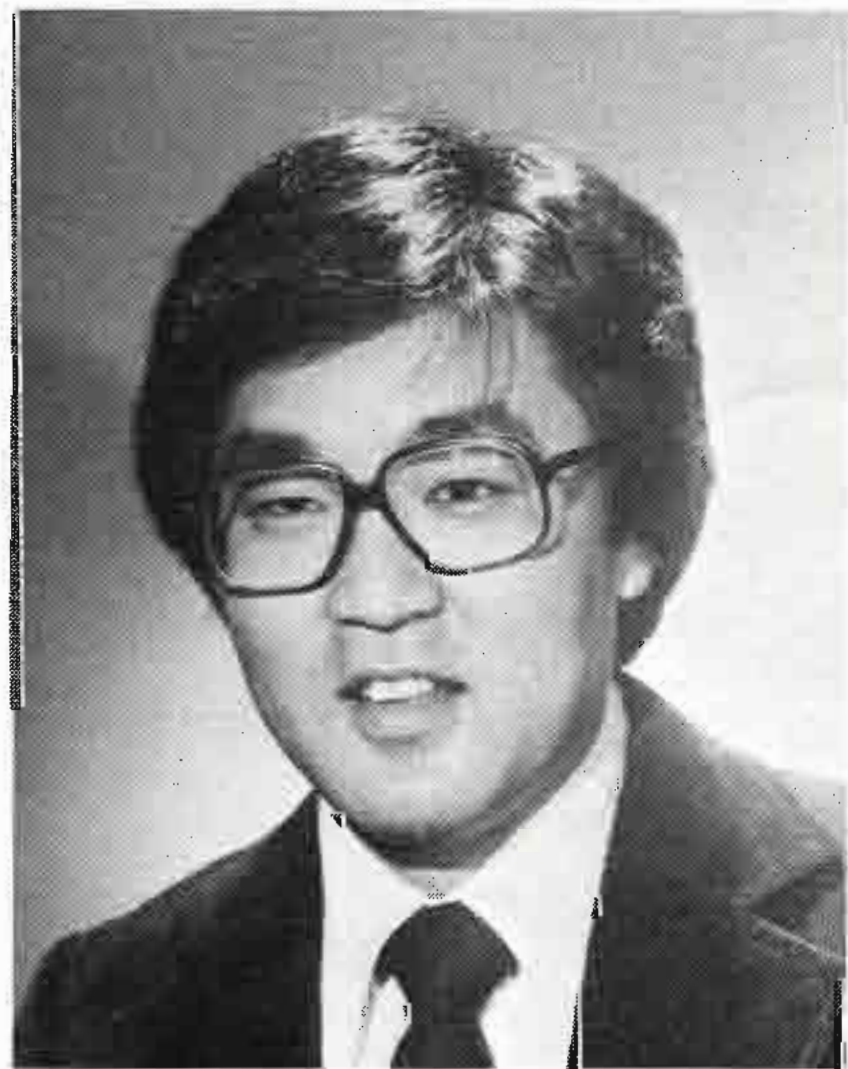


**JAMES R. CARRAS**  
**DEPUTY DIRECTOR**  
**HIGHWAYS**

1  
The three divisions, Airports, Harbors and Highways, and the departmental staff offices are all part of the Department of Transportation. A director, who is appointed by the Governor, heads the Department of Transportation. He is assisted by four deputy directors who oversee the operations of the Airports, Harbors, Highways and Staff Offices.



**JAMES B. McCORMICK**  
**DEPUTY DIRECTOR**  
**HARBORS**



**DR. JONATHAN SHIMADA**  
**DEPUTY DIRECTOR**  
**AIRPORTS**

# ADVISORY COMMISSION



**William Kennison**  
*Chairman*  
3rd Senatorial District



**Kenneth I. Craw**  
*Vice-Chairman*  
Member-at-large



**Paul T. Matsumoto**  
1st Senatorial District



**Keith I. Oda**  
4th Senatorial District



**Richard Arakaki**  
Member-at-large



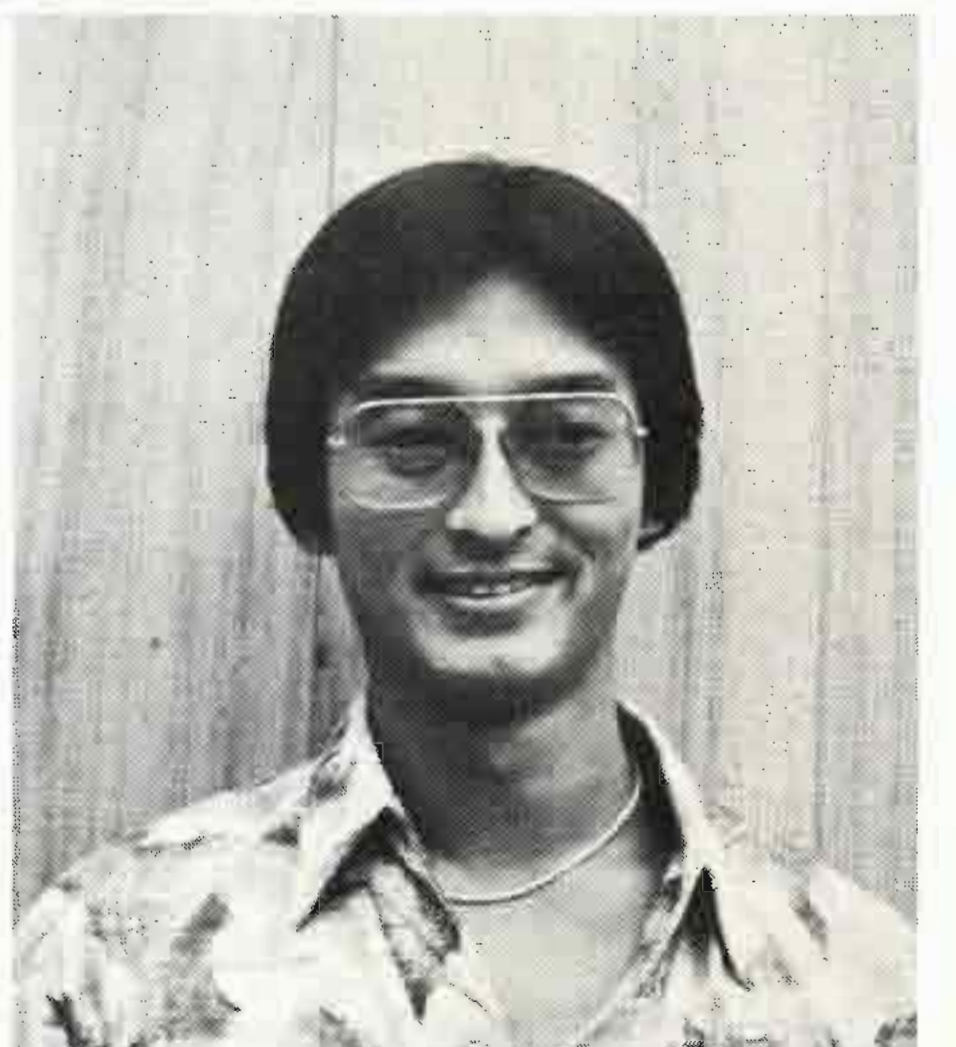
**Mrs. Dorothy Wells Lum**  
Member-at-large



**William Y. Nakamatsu**  
5th Senatorial District

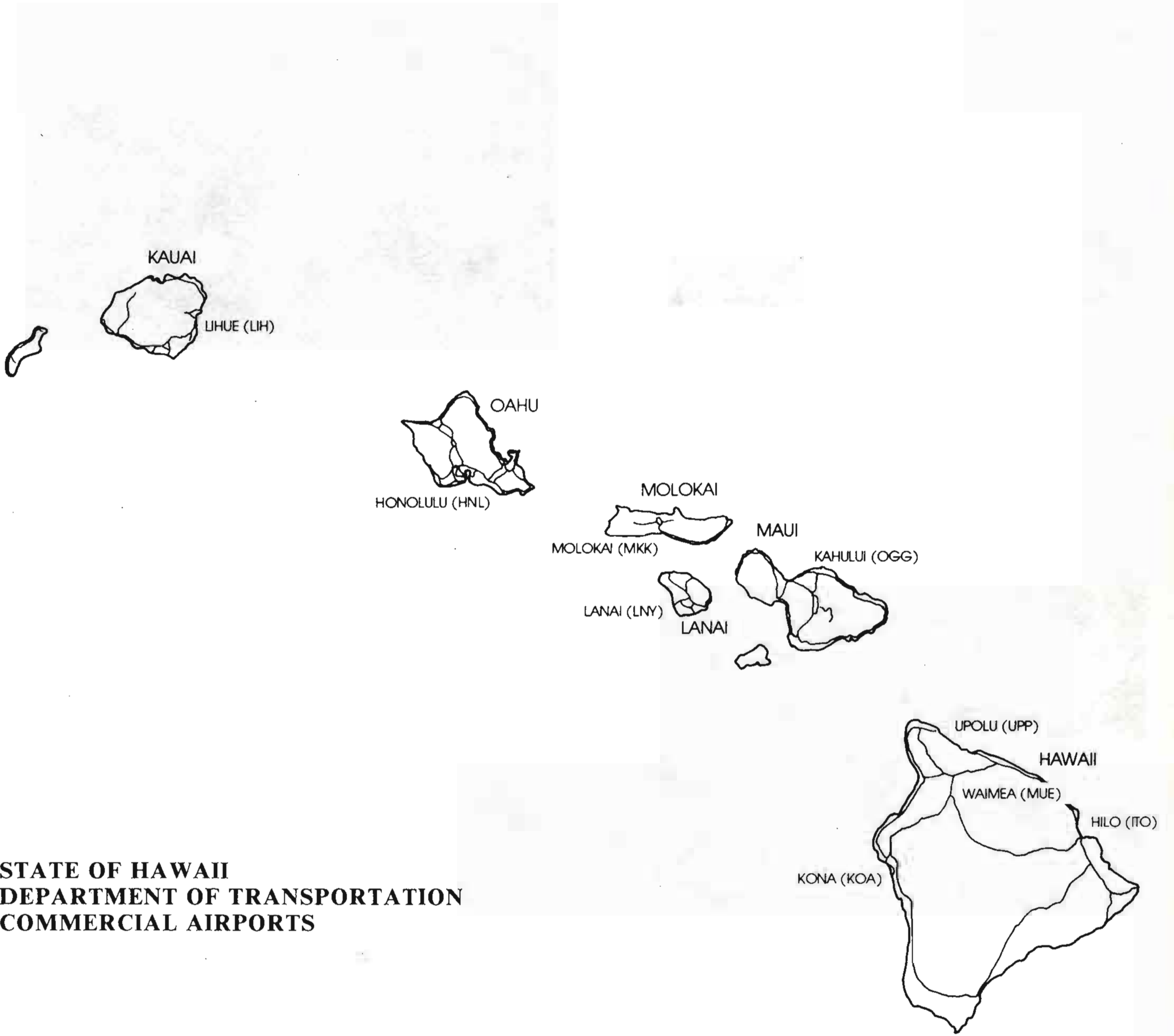


**Chew Hoy Lee**  
Member-at-large



**Mark K. Tanaka**  
6th Senatorial District

# AIRPORTS DIVISION



STATE OF HAWAII  
DEPARTMENT OF TRANSPORTATION  
COMMERCIAL AIRPORTS



*Honolulu International Airport 1981, Gateway to the Islands.*

*photo by R.M. Towill Corp.*



*John Roger's Airport 1928 (currently Honolulu International Airport).*

# AIRPORTS DIVISION

The Statewide Airports System provides major support for Hawaii's tourist industry. The system is managed by our Airports Division and consists of three primary airports, three secondary airports, three feeder airports, five general aviation airports and one heliport (see illustration).

Safety improvements, beautification, and operational improvements were made throughout the system this year.

## OAHU

### HONOLULU INTERNATIONAL AIRPORT

In 1981, Honolulu International Airport was ranked as the 15th busiest airport in the world by the Airport Operators Council International (AOCI).



*Honolulu International Airport's busy terminal.*

The Honolulu International Airport is now capable of accommodating more than 15 million travelers a year, more than double the amount it could handle ten years ago.

During the year, runway 8-left underwent reconstruction and grooving to improve airfield safety.

After an absence of six years, American Airlines re-entered the Hawaii market with its Honolulu flights on December 17, 1980. In March 1980, South Pacific International Airlines also began scheduled direct service from Pago Pago and Papeete to Honolulu.

A new interisland airline, Mid Pacific Airlines, started with daily flights serving Kauai, Maui and Oahu in March 1980.



*Inside the new central concourse at Honolulu International Airport.*

The central concourse at the Honolulu International Airport began in June of 1977 and was dedicated on July 24, 1980 at an overall construction cost of \$31.4 million. The ten gates, 14 - 23, at this new central concourse, increased the airport's capability of handling wide-body aircrafts, and afforded passengers to enplane and deplane directly from the holding rooms. The second floor area contains a restaurant, a cocktail lounge, a newsstand, restrooms, a Visitor Information Program booth, telephones and other concession space. Tenant airline administrative and operations offices will occupy the ground floor.

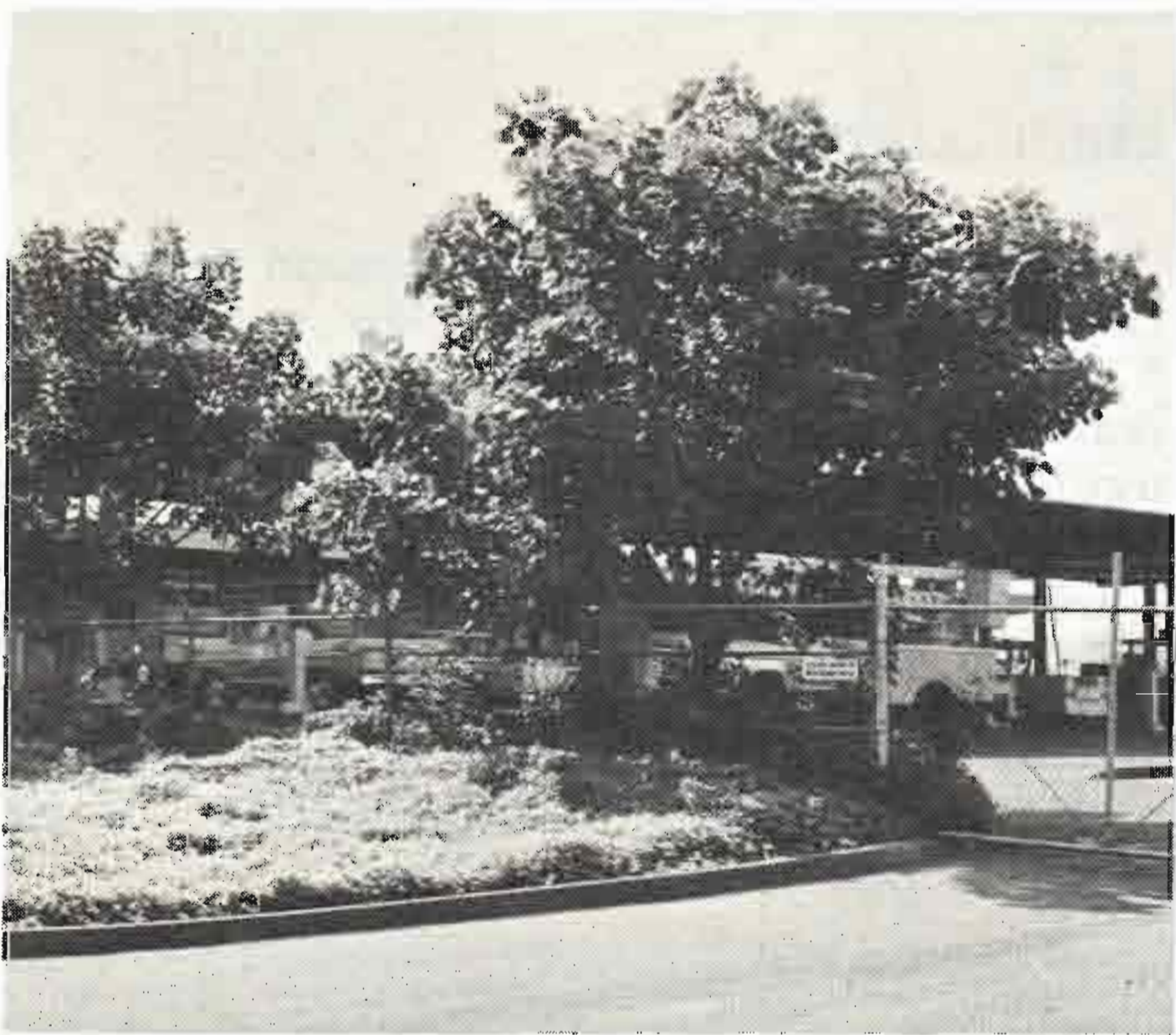
### DILLINGHAM FIELD

A new administration building, new hangars, security fencing, and improvements to the runway, taxiway and apron are under construction at Dillingham Field. This \$3.8 million upgrading of Dillingham Airfield at Mokuleia, Oahu, is to partially relieve the Honolulu International Airport of general aviation traffic.

## MAUI

### KAHULUI AIRPORT

A ground breaking ceremony for Kahului Airport's general aviation facilities was held on May 22, 1981. The improvements include three tee-hangars which will house thirty aircrafts and a restroom area, a new taxiway entrance to the east ramp, marked parking stalls for thirty-eight cars and a new roadway. The new facilities will be completed in nine months at a cost of \$1.6 million.



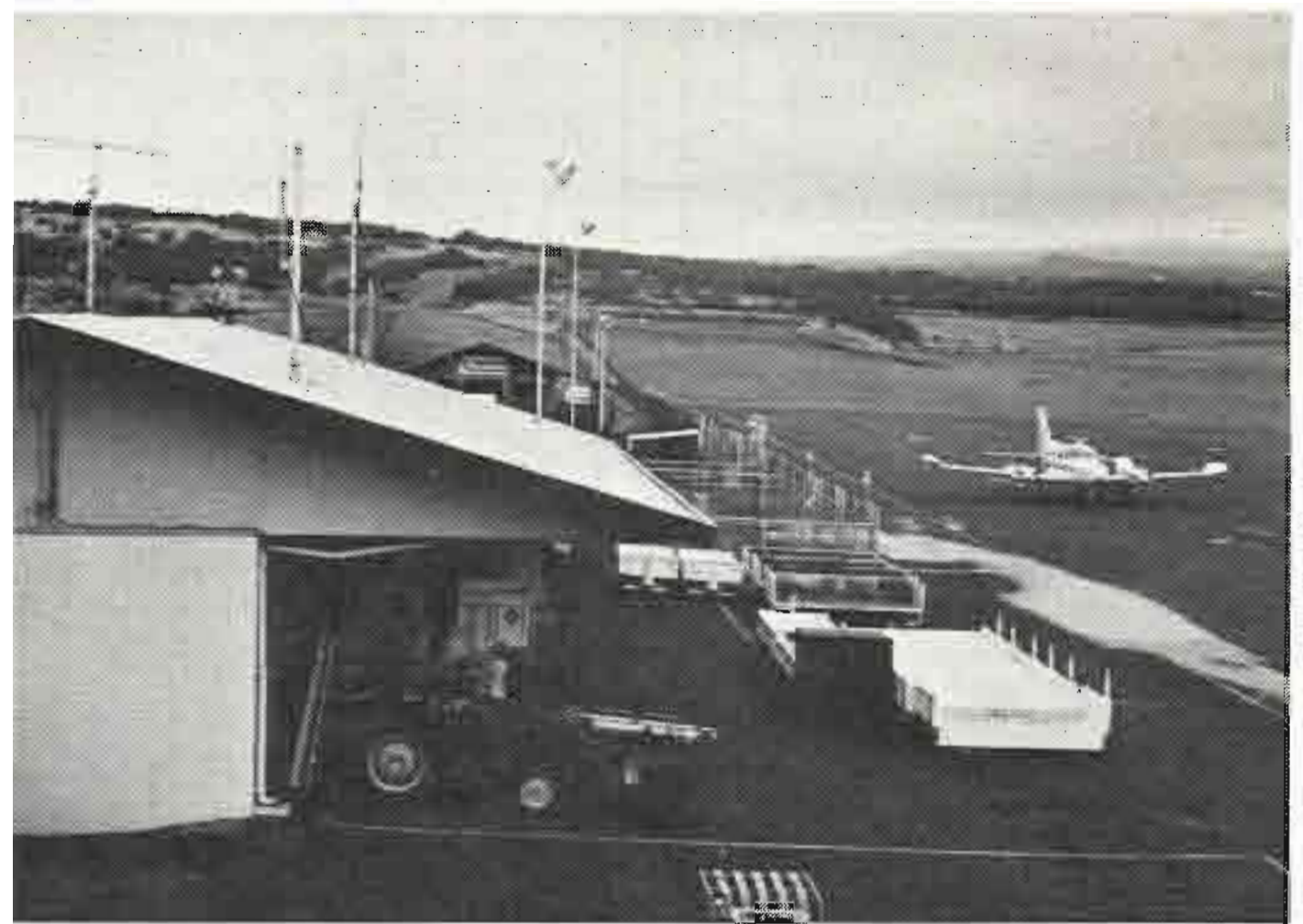
*Landscaping work completed at the Kahului Airport's maintenance and baseyard building.*

Airport terminal planning for future passenger traffic at Kahului Airport was continued during the year. In March 1981, an informational meeting was held to present the proposed plans for the Kahului Terminal Expansion.

## MOLOKAI

### MOLOKAI AIRPORT

A public informational meeting was held on Molokai in November 1980 to present findings of the Molokai Airport Master Plan Study concerning the airport's status, runway, and terminal possibilities.



*View of Molokai Airport's terminal and ramp area.*

### KALAUPAPA AIRPORT

Design began on terminal maintenance facilities.

## HAWAII

### KEAHOLE AIRPORT

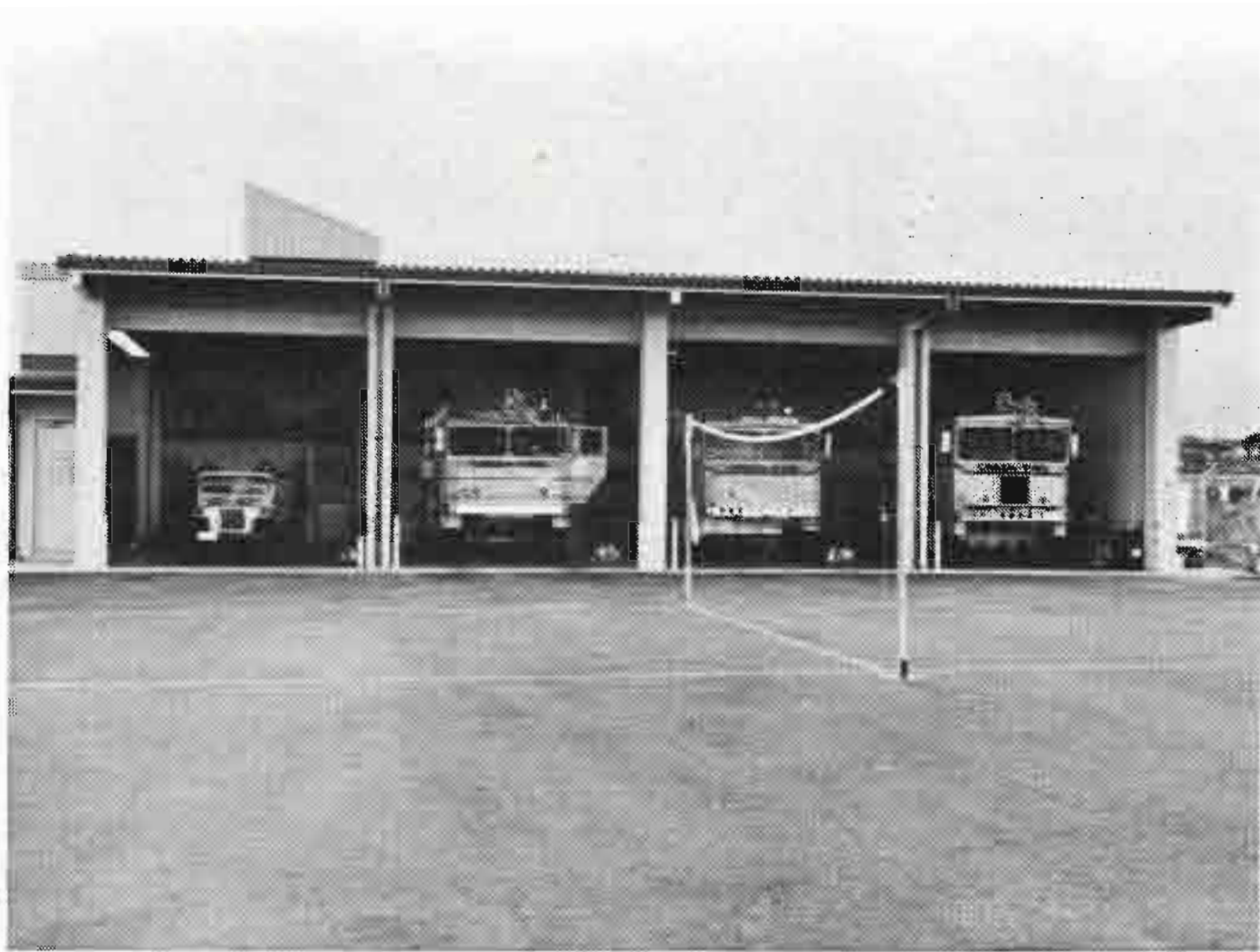
A new Crash/Fire Rescue Station was dedicated at Keahole Airport on February 27, 1981. The station provides a training area, a housing unit for sixteen crash/fire crew members and a garage area for four rescue vehicles. The unique feature of the station is the installation of the Airport Division's first solar heating unit. Construction of the station began in March 1980 and was completed at a cost of \$727,765.



*The newly landscaped station at Keahole Airport, Big Island.*



# AIRPORTS DIVISION



*Newly finished complex for four crash/fire rescue vehicles stationed at Keahole Airport.*

Improvements on the midfield or "Delta Taxiway" were completed in 1980 at Keahole Airport. This Delta Taxiway improves the efficiency of flight operations by linking the runway with the terminal area, and enhances airport safety by providing ready access for crash/fire rescue crews to the runway.

## WAIMEA-KOHALA AIRPORT

Painting of the Waimea-Kohala Airport was completed in June 1981. All external and roofed areas were painted to enhance the terminal building.



*Waimea-Kohala Airport's terminal and ramp area.*

Parking improvements were made by designating overnight and long-term parking areas. This eliminated parking on grassed areas to allow for proper grounds maintenance.

## UPOLU AIRPORT

A regular ground maintenance program was initiated to beautify Upolu Airport. Design began on a portable waterline from the highway to the airport terminal.

## GENERAL LYMAN FIELD

Improvements to enhance safety, operational efficiency, and increase security at General Lyman Field were continued.

## LIHUE AIRPORT

On March 6, 1981, a ground breaking ceremony was held for a new north-south 6,500 foot by 150-foot runway. This construction is the beginning phase of an overall master plan for the improvement of Lihue Airport. It will allow for quieter take-offs and landings and improve the safety and efficiency of all airport operations. The first phase of the Lihue Master Plan also includes a new terminal and extensive beautification and landscaping.



*Construction underway on the north-south runway located at Lihue Airport.*

# AIRPORTS DIVISION

## AIR TRAFFIC STATISTICS FY 1980-1981

	PASSENGERS			CARGO (TONS)			MAIL (TONS)			AIRCRAFT OPERATIONS				
	OVERSEAS	INTER-ISLAND	TOTAL	OVERSEAS	INTER-ISLAND	TOTAL	OVERSEAS	INTER-ISLAND	TOTAL	AIR CARRIER	AIR TAXI	GENERAL AVIATION	MILITARY	TOTAL
Honolulu International	9,426,839	5,633,101	15,059,940	230,664,723	125,262,737	355,927,460	41,562,440	13,840,554	55,402,994	122,143	75,639	134,184	31,986	363,952
Dillingham Airfield	-	-	-	-	-	-	-	-	-	-	-	109,340*	15,956	125,296
General Lyman	117,655	927,350	1,045,005	12,694,043	60,992,194	73,686,237	169,821	4,284,342	4,454,163	13,062	9,621	20,538	11,337	54,558
Keahole	-	1,049,714	1,049,714	-	16,246,297	16,246,297	-	1,992,429	1,992,429	13,448	14,694	25,227	8,614	61,983
Waimea	-	15,407	15,407	-	74,976	74,976	-	-	-	-	-	-	-	-
Upolu	-	2,089	2,089	-	-	-	-	-	-	-	-	-	-	-
Kahului	-	2,954,470	2,954,470	-	43,303,602	43,303,602	-	4,840,220	4,840,220	40,734	28,144	31,695	7,907	108,480
Molokai	-	158,194	158,194	-	1,905,546	1,905,546	-	471,141	471,141	3,404	45,924	11,900	4,264	65,492
Lanai	-	39,842	39,842	-	773,837	773,837	-	34,090	34,090	-	-	-	-	-
Hana	-	20,790	20,790	-	5,049	5,049	-	-	-	-	-	-	-	-
Kalaupapa	-	3,881	3,881	-	222,810	222,810	-	-	-	-	-	-	-	-
Lihue	-	2,103,146	2,103,146	-	23,929,632	23,929,632	-	2,432,054	2,432,054	23,317	26,589	11,559	1,519	62,984
Other (Privately Owned Airports)	-	113,384	113,384	-	-	-	-	-	-	-	-	-	-	-
<b>STATEWIDE TOTAL</b>	<b>9,544,494</b>	<b>13,021,268</b>	<b>22,565,862</b>	<b>243,358,766</b>	<b>272,716,680</b>	<b>516,075,446</b>	<b>41,732,261</b>	<b>27,894,830</b>	<b>69,627,091</b>	<b>216,108</b>	<b>200,611</b>	<b>344,443</b>	<b>81,583</b>	<b>842,745</b>

(\*Gliders - 33,066 represent gliders).

# FINANCIAL SUMMARY AIRPORTS DIVISION

## Statement of Revenues and Expenses Fiscal Year 1981

Operating revenues:		
Concession fees		\$50,017,576
Aeronautical rentals		7,396,075
Aviation fuel tax		4,826,979
Nonaeronautical rentals		1,561,984
Miscellaneous		<u>1,557,136</u>
Total operating revenues		65,359,750
Operating expenses other than depreciation		<u>32,533,652</u>
Operating income before depreciation		32,826,098
Depreciation		<u>11,771,274</u>
Operating income		<u>21,054,824</u>
Nonoperating revenues (expenses):		
Interest income:		
Certificates of deposit		10,631,277
Investment in financing leases		654,442
Interest expense:		
Revenue bonds:		
Airports system		(14,685,676)
Special facility		(654,442)
General obligation bonds		(3,542,655)
Gain on early redemption of bonds		<u>719,352</u>
		<u>(6,877,702)</u>
Net income		<u><u>\$14,177,122</u></u>

# HIGHWAYS DIVISION COMBINED STATEMENT OF RECEIPTS, EXPENDITURES AND BALANCES FISCAL YEAR 1981

	<u>Special Funds</u>	<u>Bond Funds</u>	<u>General Funds</u>	<u>Totals</u>
<b>BEGINNING BALANCES:</b>				
Carry-Over From Previous Year	\$24,366,536	\$49,200,885	\$109,223	\$73,676,644
Appropriations Lapsed	--	396,087	109,223	505,310
	<u>\$24,366,536</u>	<u>\$48,804,798</u>	<u>\$ --</u>	<u>\$73,171,334</u>
<b>RECEIPTS:</b>				
Fuel Tax Collections	\$28,500,392			\$28,500,392
Federal Grants-In-Aid	52,129,105			52,129,105
Legislative Appropriations		\$23,351,203		23,351,203
State Motor Vehicle Weight Tax	7,709,936			7,709,936
State Vehicle Registration	614,003			614,003
Airports Contribution for Roadway Construction	5,000,000			5,000,000
Other Revenue	1,682,282			1,682,282
<b>TOTAL RECEIPTS</b>	<u>\$95,635,718</u>	<u>\$23,351,203</u>		<u>\$118,986,921</u>
<b>EXPENDITURES:</b>				
Debt Service Payments	\$15,801,962			\$15,801,962
Surcharge Central Services	1,134,044			1,134,044
Divisional Administration	2,131,508			2,131,508
Highway Maintenance, Operations	21,630,105			21,630,105
Highway Capital Improvement Projects	42,031,829	\$29,246,171		71,278,000
Departmental Administration	1,030,943			1,030,943
Highway Safety Coordinator	375,473			375,473
Highway Supportive Services	44,785			44,785
Grants to Counties	2,323,277			2,323,277
Transfer to Other Agencies	1,019,000			1,019,000
	<u>\$87,522,926</u>	<u>\$29,246,171</u>		<u>\$116,769,097</u>
Interfund Adjustments	2,296,502	(2,296,502)		--
<b>TOTAL EXPENDITURES</b>	<u>\$89,819,428</u>	<u>\$26,949,669</u>		<u>\$116,769,097</u>
<b>GLOSING BALANCES:</b>				
Encumbrances	\$10,357,680	\$11,808,710		\$22,166,390
Unexpended Allotments	19,825,146	5,152,745		24,977,891
Unallotted Appropriations	--	28,244,877		28,244,877
<b>TOTAL</b>	<u>\$30,182,826</u>	<u>\$45,206,332</u>	<u>\$ --</u>	<u>\$75,389,158</u>

Includes \$786,279 clause B savings to the State that was applied wholly to State-funded highway construction program of \$9,020,105 (Ref. 23 USC 120(a)(B))