

THE STATE OF HAWAII  
DEPARTMENT OF TRANSPORTATION

1992  
REPORT TO THE  
GOVERNOR



## LETTER FROM THE DIRECTOR



*The Honorable  
John Waihee  
Governor,  
State of Hawaii*

I am pleased to submit the Department of Transportation's Annual Report for the fiscal year ending June 30, 1992.

When I joined the Department on December 1, 1991, my first priority was to see that the projects already underway continued to their successful completion.

In January 1992, we completed the Statewide Transportation Plan following the completion

of highway master and transit plans for all islands.

Our vision of the future of Hawaii includes airports, harbors and highways statewide that insure the rapid and efficient movement of people and goods to local, national and international destinations.

The Statewide Transportation Plan identifies our planning direction and provides a blueprint for developing programs in air, land, and water transportation modes.

It also provides detailed, prioritized listings of programs and improvements in the short-, mid-, and long-term.

We have the vision, our job is to get there from here.

The Department is moving ahead on projects that will improve our facilities statewide.

The new Interstate Route H-3 Freeway passed major milestones with the tunneling through of the Trans-Koolau tunnel and the completion of the Hospital Rock Tunnel, the Animal Quarantine Station Functional Replacement, and the mauka and makai sections of the Quarry Viaduct.

We also realigned a section of the freeway in North Halawa Valley so that it will bypass archaeological Site 85.

Work is rapidly drawing to a close on the first phase of the expansion of Kalaniana'ole Highway. The project to relieve congestion along the East Oahu corridor will expand the road from two lanes in each direction to a six-lane divided highway. Phase I covers the area from West Hind Drive in Aina Haina to East Halemaumau Street in Niu Valley.

Phase II, which is scheduled to start in mid 1993, will continue the widening to Hawaii Kai Drive.

To keep the public up to date on the progress of the construction, we sent out the Kalaniana'ole Highway Informer to residents every two months and we have the Kalaniana'ole Highway Hotline for people to call to get answers to specific questions they have about the project.

The expansion of our airport system continues in order to meet the demands placed on it by large numbers of local, Mainland, and international travelers.

At Honolulu International Airport, the construction of the new Interisland Terminal Complex is well along. The Central Building is expected to open in late Spring of 1993.

While Honolulu International is one of the nation's busiest facilities, our Neighbor Island airports are also heavily used.

At Kahului Airport, we improved service to air travelers by converting the old terminal building into a baggage claim area with five baggage carousels and conveyer systems; flight information display; a Visitor Information Booth; and airline baggage service offices.

Of special significance was the completion of renovations to the airport, wharf, and roads at Kalaupapa, Molokai. While most of Hawaii's residents and visitors will never use the newly improved facilities, they are a boon to the residents of the isolated community.

The renovations included realignment and widening of the runway; strengthening of the barge wharf and removal of rocks from the berthing basin; and resurfacing more than seven miles of community roads.

Our commercial harbors are also expanding to meet the present and future needs of our state.

We are expanding the container yard area and adding new piers at Sand Island to improve our overseas cargo handling capabilities.

In accordance with the Honolulu



*Rex Johnson,  
Director  
State Department  
of Transportation*



*Edward Y. Hirata,  
Former Director  
State Department  
of Transportation*

Waterfront Master Plan, we are improving the Pier 39-40 area so that interisland cargo operations can be shifted from the congested Pier 24-29 area.

**T**he Department continues to work with the Aloha Tower Development Corporation in the development of the Aloha Tower Complex.

To provide better service to the growing West Hawaii area, we completed construction of a new overseas pier and cargo area at Kawaihae Harbor.

We are in the process of constructing a new 625-foot pier at Nawiliwili Harbor for general cargo operations.

At the end of FY92, the Department's Boating Program was shifted to the Department of Land and Natural Resources. The change eliminated overlapping jurisdictions and should make things better for the recreational boater.

DLNR already supervises programs dealing with recreation, such as the creation and maintenance of hiking trails and use of near shore waters, while the boating program was the only one of its type at DOT.

For the fifth consecutive year, we conducted the "Beat the School Jam" program in cooperation with the City and County of Honolulu Department of Transportation Services and other public and private agencies to provide a smooth transition from summer traffic to school traffic. We encouraged carpooling, staggering work hours, adjusting travel times, and riding the bus. We also stationed tow trucks at strategic locations to get stalled and accident-involved cars out of the way as soon as possible.

We held the first "Dare to Share" campaign to encourage workers at DOT, the Department of Business, Economic Development, and Tourism, and the Leeward Oahu Transportation Management Association to find alternatives to driving to work alone during rush hour.

In addition to trying to keep traffic moving on our highways, we are continuing our efforts to ensure the highways look good and are free of litter.

**O**ur Adopt-A-Highway program reached its first anniversary in June 1992 with 226 volunteer groups statewide. Each of the groups pledge to pick up litter from sections of our highways a minimum of four times a year for two years.

Completing its second year, was our DOT Traffic Helicopter Program. "Capt. Irwin" Malzman provides helicopter traffic reports to all interested Oahu radio stations Monday to Friday during morning and afternoon rush hours. In exchange, the



radio stations provide us with free 30 second commercials for our highway safety messages and other DOT programs.

**A** special milestone was reached within our Highways Division when Highways Chief Tetsuo Harano recorded his 50th year of service to the state.

Harano, who joined the Department immediately after graduating from the University of Hawaii in the summer of 1942, has been involved from the beginning in the construction of virtually all of Hawaii's major highways, including all three portions of our Interstate Highway System, the H-1, H-2, and H-3.

In this day and age, most people never reach 50 years in the work force. The fact that Harano not only has been working for half a century, but has spent all that time working to make our highway system serve our needs is a tribute to his dedication to public service.

Sincerely,

Rex Johnson  
Director of Transportation

*Volunteers clean up during the annual Litter Bugs Me! campaign.*

*Front and back cover: Construction on the new Interisland Terminal Complex at HIA has passed the halfway point.*

While many of the nation's airports continued to suffer declines in passenger traffic in the wake of the Gulf War and the recession, the State of Hawaii managed to reverse the trend in FY92 with slight increases at all but one of the islands' five major airports.

Hawaii's airports handled 35,146,779 passengers, a 2.6 percent increase from the previous fiscal year.



4  
The new ARFF station #1 at HIA opened with a blessing.

The Big Island airports recorded both the state's largest gain and only loss in passenger traffic. Hilo International was the bright spot with a 7.2 percent increase compared to 1991, while Keahole Airport's total was down 0.3 percent.

Nationally and worldwide, Honolulu International Airport (HIA) remained among the busiest airports in 1991, ranking 10th busiest in the United States, 15th busiest in the world, and fifth busiest in the Pacific Rim region. HIA handled 22,898,205 passengers in FY92, up 2.6 percent from the previous fiscal year.

In continuing efforts to accommodate Hawaii's traveling public and essential tourism market, new and ongoing improvements and expansion of state airport facilities highlighted the agenda for FY92.

The most noticeable aspect of this effort at HIA is the continuing work on the new Interisland Terminal Complex. When completed in 1993, the \$136 million, seven-floor Central Building will include baggage claim and ground transportation facilities on the ground level; ticket lobbies, concessions and passenger waiting areas on the second level; intra-airport transportation stations for the Wiki Wiki bus and eventually for the automated

people mover on the third floor; public parking for 1,800 vehicles on the fourth through seventh levels; and state Airports Division offices on the seventh level.

Hawaii's position as the premier international gateway to the United States from the Pacific Rim requires a facility that will adequately and expeditiously handle federal inspection processing of international passengers. Plans for a new International Terminal Building (ITB) capable of handling 4,000 passengers per hour were redesigned and allowed the state to reduce the facility cost by \$100 million.

The four-level ITB will include baggage handling areas, utility systems and tenant support facilities on the basement level; Federal Inspection Services facilities, baggage claim, concessions, and tour group facilities on the first level; passenger ticketing facilities, concessions, security screening, waiting lounges, agricultural inspections and tour group facilities on the second level; and connections to the automated people mover (APM) system on the third level.

Cargo handled through HIA increased slightly from the previous year to 374,367 tons of interisland and overseas cargo in FY92. Ongoing planning for a future Air Cargo Facility took a major step forward with the acquisition of 23.4 acres of land along Ualena Street where the new facility will be located.

The first phase single-story structure will provide air cargo handling facilities for three major carriers. Construction of the Air Cargo Facility is scheduled for mid 1993 with the first phase targeted for completion in early 1994.

Also to be housed on Ualena Street will be the maintenance facility of the future APM which was recently named "Kumulani" meaning "base of the sky" or "horizon." When completed in 1996, Kumulani will provide a practical means for getting around HIA, replacing the current Wiki Wiki bus. Blue and white were selected for Kumulani's official colors, and a flag-shaped symbol has been chosen for the system's logo.

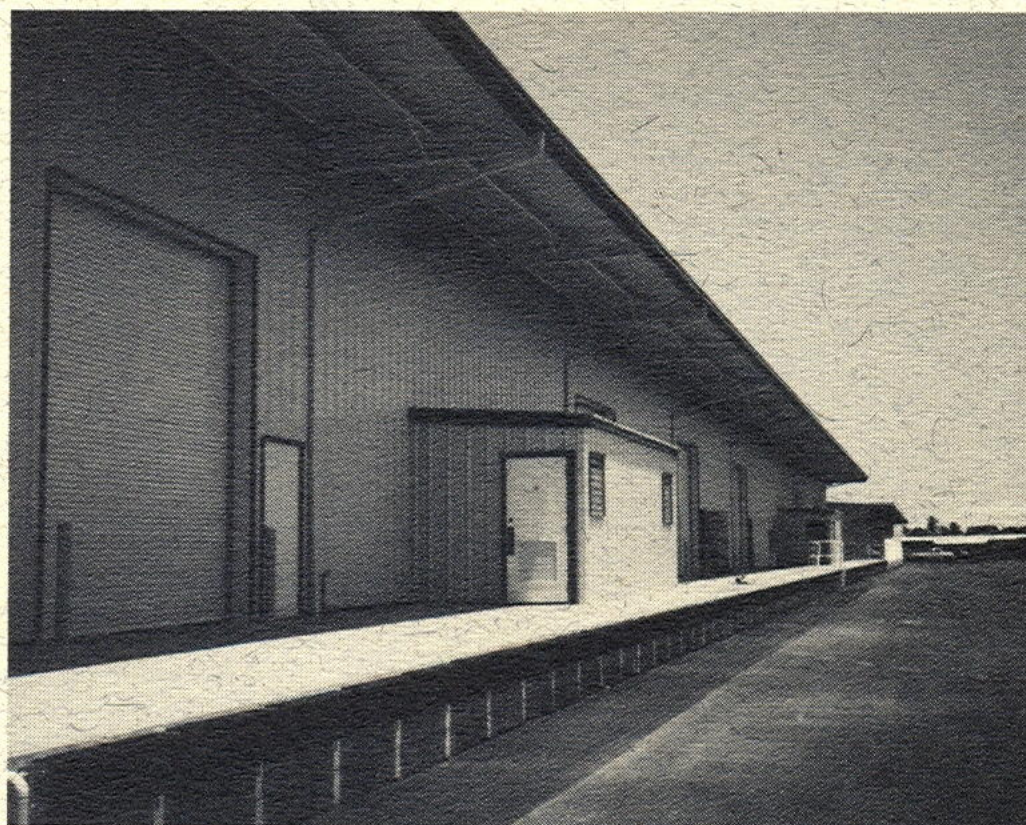
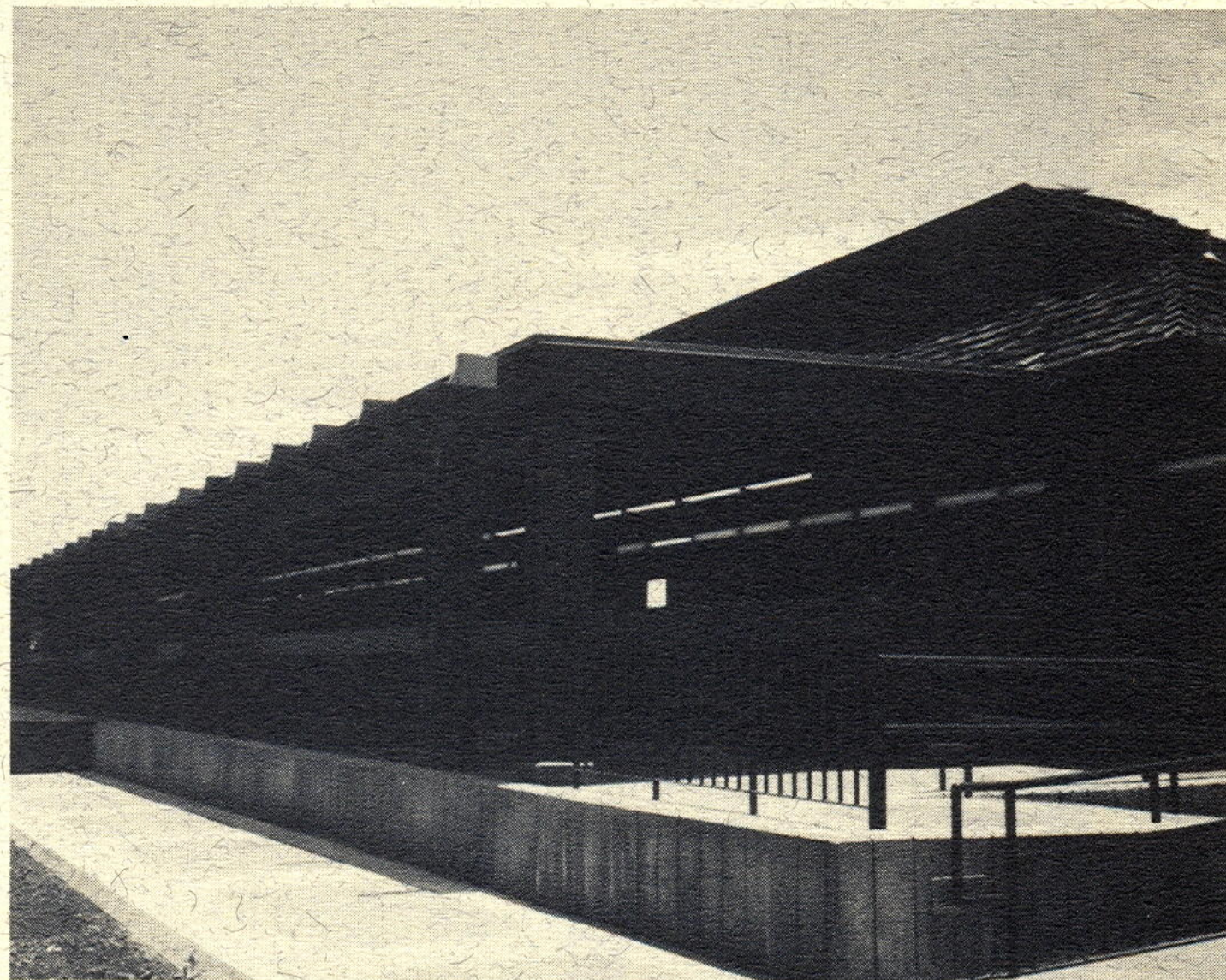
New general aviation facilities at the South Ramp were completed with the construction of 81 new T-hangars, an aircraft tie-down area, and a transient aircraft parking area. Space was also provided for small, fixed-based operators, private aircraft hangars, and automobile parking.

A new Aircraft Rescue and Firefighting station was dedicated on April 24, 1992. The \$4.6 million, 13,328 square foot facility includes an exercise room, large kitchen facility, training room, and individual bunk rooms.

Phase II of the Pacific Aerospace Museum opened on June 3 with six new interactive computer displays that allow visitors to get a "hands-on" approach to learning about flight and space. Located in HIA's central lobby, the museum showcases a variety of exhibits, including a multi-media theater that features a historical "tour" of significant Pacific exploration events.

Kahului Airport accommodated 4,939,223 passengers in FY92, an increase of four percent over FY91. The Honolulu-Kahului route is the fourth busiest city-to-city route in the U.S.

In a continuing effort to better accommodate Maui's air travelers, the old terminal, which was replaced in 1990 with



*New facilities completed at Keahole Airport included the Ground Transportation Building (above) and the Cargo Building (left).*



*Father Arsene Daenen blesses the Kalaupapa improvements, as Director Rex Johnson looks on.*

the present \$42.6 million terminal, was converted into a baggage claim area. The facility has five baggage claim carousels, a flight information display board, and airline baggage service offices.

In progress is the construction of four additional holdrooms and 12 aircraft gates. The \$64 million project is expected to be fully completed by the end of 1992.

About 2.7 million passengers passed through Lihue Airport this year, up one percent from last year. The Honolulu-Lihue route is the ninth busiest in the country.

Among the major improvements completed this year was a \$3.8 million reconstruction and realignment of 3,400 feet of Taxiway "A." As a result, Taxiway "A" runs parallel with Runway 3-21 and meets current FAA dimensional and pavement design standards.

Also completed was a \$4.3 million project to expand and develop the cargo and general aviation ramp and lease lots. The project included constructing an aircraft parking apron and associated taxiway and developing lease lots for commercial aviation activities.

On the planning end, an environmental impact statement is underway for a proposed inland heliport. An interim helicopter facility located at Lihue Airport is being used to serve helicopter operations until the inland heliport is built. The interim heliport includes three take-off and landing pads, parking aprons for 20 helicopters, hydrant fueling facilities, and vehicular parking.

**K**eahole handled 2,119,712 passengers in FY92, and passenger traffic between Honolulu and Kona ranked Keahole the 14th busiest route in the United States.

In the past 10 years, passenger traffic at Keahole has doubled, prompting the development of several major improvement and expansion projects.

One such project was a \$1.5 million renovation of the ground transportation facility that went into operation in June. The facility doubled the size of the u-drive operator booths and provided 40% more space in the public waiting area. Ramps and lowered counters now provide easier access for the disabled, and about 50% more parking spaces have been added for rental vehicles.

A new \$1.3 million cargo building has also doubled cargo capacity at Keahole by providing 16,000 square feet of space.

A temporary commuter terminal consisting of two 1,500 square-foot trailers is also now in use, providing offices, customer service counters and a public waiting area. The temporary facility will be replaced when the new general aviation area is completed. In the main terminal, a new mechanical baggage delivery system was installed with additional baggage handling space to better serve customers.

Also completed was a new Civil Air Patrol hangar which includes provisions

for future offices.

A new \$1.7 million baseyard facility at Molokai Airport was dedicated in June 1992. The 2,800 square-foot facility includes two service bays, three parking bays, a conference room, office space, lockers and showers, and storage areas.

**A**t Kalaupapa airport the \$6.9 million renovation included the realignment and widening of the runway, extension of the runway safety area, airfield lighting for emergency night operations, and a paved aircraft apron.

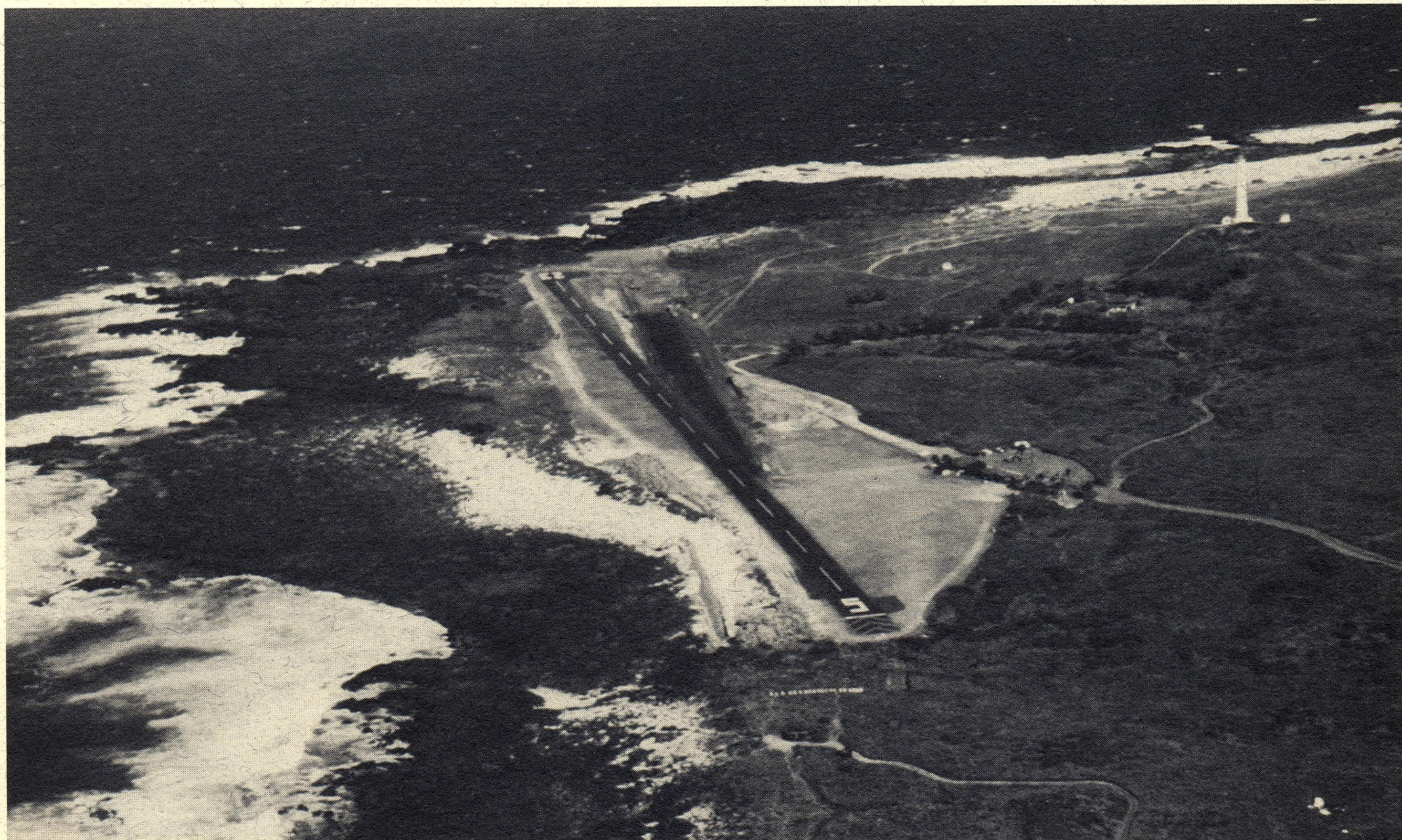
The state, community representatives and Maui County officials have been working together to develop a master plan for Lanai Airport through the year 2005.

Approval is still pending by the Maui County Council for rezoning of agricultural land for airport use. The State Land Use Commission has already given its approval for the rezoning which will be used for expansion of the terminal and extension of the runway.

**T**he state awarded a \$7.5 million contract to Metric Construction Co., Inc., for construction of the new Lanai Airport terminal building, access road, and parking area once the rezoning approval is granted.

To accommodate increasing cargo operations at Lanai, construction began in April on a \$450,000, 4,000 square foot cargo building.

*The runway at Kalaupapa Airport was realigned and widened and the safety area extended.*



## THE DEPARTMENT OF TRANSPORTATION

The Department of Transportation was formed shortly after Hawaii became a state in 1959. It has three divisions, Airports, Harbors, and Highways, which are supported by 10 departmental staff offices. The offices are Statewide Transportation Planning; Hazardous Materials; Public Affairs; Visitor Information; PPB Management and Analytical; Personnel; Business Management; Computer Systems and Services; Contracts; and Property Management.

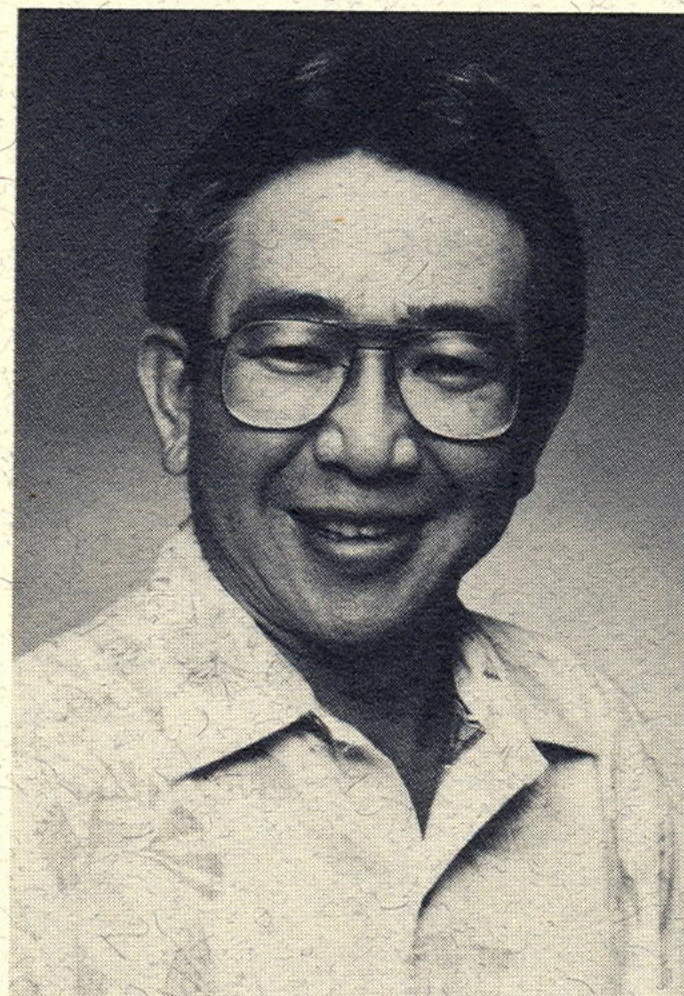
### FUNDING

The DOT is required by law to generate its own monies to fund its programs and projects. Independent special funds were established for each of the three division's major programs. Each fund is expected to generate enough revenue to pay for program operating and maintenance costs and to contribute a fee to the State General Fund for central services. This fee is set at 5 percent of each special fund's gross revenues after debt service.

These special funds must also provide a higher level of cash financing in the Capital Improvement Program to ease the burden on debt service. Since the Capital Improvement Program is large, the DOT continues to rely on reimbursable General Obligations Bonds and federal aid to help fund programs and projects.

### HIGHWAY FUND

The State Highway Fund was established under Section 248-8 HRS, as amended. The principal sources of revenue are a 16 cent per gallon fuel tax, and a vehicle weight tax of 3/4 cent per pound for vehicles weighing less than 4,000 pounds, 1 cent



*Calvin Tsuda, Deputy Director*



*Joyce Omine, Deputy Director*

per pound for vehicles between 4,000 and 7,000 pounds, 1 and 1/4 cent per pound for vehicles from 7,000 to 10,000 pounds and a flat \$150 for vehicles over 10,000 pounds, and the vehicle registration fee.

### BOATING SPECIAL FUND

The Boating Special Fund was established in accordance with Section 266-19 and 277-20 HRS, as amended. Mooring fees, residence service charges, commercial user fees, and the fuel tax make up 90 percent of the Boating Special Fund. The fund is used to cover the costs of berthing facilities and other harbor backup facilities, such as roadways, parking lots, and utilities.

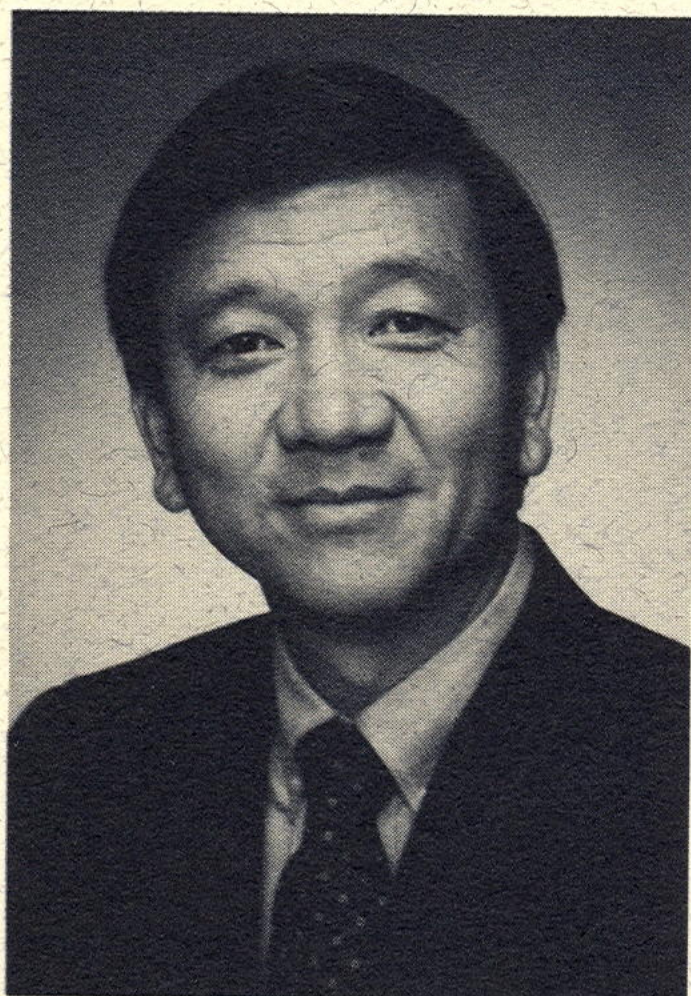
General Funds are used for the construction of breakwaters, navigational aids, and dredging of major channels and turning basins for small boat harbors.

### AIRPORT REVENUE FUND

The Airport Revenue Fund was created under Section 261-5, HRS. Its primary revenue sources are the aviation fuel tax, landing fees, airport use charges, concession fees, and investment income. Other revenue sources include rentals and miscellaneous earnings.

### HARBOR SPECIAL FUND

The Harbor Special Fund was established under Section 266-19, HRS. The majority of the fund's revenues come from fees and charges for wharfage, dockage, demurrage, and the rental of land and wharf space at the state's commercial harbors. The remaining amount is generated from various service charges, permits, and licenses.



*Al Pang, Deputy Director*



*Jeanne Schultz, Deputy Director*

## AIRPORTS DIVISION

### Statements of Revenues, Expenses and Changes in Retained Earnings

Years ended June 30	1992	1991
Operating Revenues		
Concession Fees	294,900,176	275,997,417
Aeronautical rentals	13,825,594	14,736,374
Airport use charge and landing fees	7,743,749	7,592,664
Aviation fuel tax	7,311,745	7,236,016
Nonaeronautical rentals	4,735,288	3,954,050
Miscellaneous	6,014,500	5,495,055
Total Operating Revenues	334,531,052	315,011,576
Operating expenses other than depreciation	116,834,300	94,591,435
Operating income before depreciation	217,696,752	220,420,141
Depreciation	35,938,518	25,539,584
Operating Income	181,758,234	194,880,557
Nonoperating revenues (expenses):		
Interest income:		
Certificates of deposit and U.S. Government securities	37,538,587	49,666,438
Note receivable	7,505,802	~
Investment in financing leases	3,063,811	2,979,490
Interest expense:		
Revenue Bonds:		
Airports system	(71,114,981)	(41,117,235)
Special facility	(3,063,811)	(2,979,490)
General obligation bonds	(798,745)	(828,881)
Other	~	9,900
	(26,869,337)	7,730,222
Net income	154,888,897	202,610,779
Add depreciation expense transferred to contributed capital - Federal Government grants	6,916,487	5,485,081
Retained earnings at beginning of year	161,805,384	208,095,860
Residual equity transfer to Highways Division	611,181,752	653,085,892
	~	(250,000,000)
Retained earnings at end of year	772,987,136	611,181,752



## PROJECTS COMPLETED & IN PROGRESS FISCAL YEAR 1991-1992

<i>Project</i>	<i>Started</i>	<i>Completed</i>	<i>Cost</i>	<i>Description</i>
Honolulu International Airport Automated People Mover	8/91	8/96	\$112M	Design, construct & install Phase I
Honolulu International Airport Airline VIP Lounges, Phase I	2/92	10/92	\$641,260	Finish space for lounges
Honolulu International Airport Aerospace Museum Int. Imprv.	1/91	8/92	\$983,000	Finish tenant space
Honolulu International Airport Mod. to Int'l Arrivals Building	3/92	11/92	\$1.8M	Phase IV-E modifications to third floor
Honolulu International Airport New 747 Gates 31-34, Phase I	11/91	8/93	\$37.6M	Expansion of Ewa Concourse
Honolulu International Airport Overseas Terminal Hardstands, Phase I	8/91	11/92	\$9.0M	Provide new hardstands on Ewa Wing
Honolulu International Airport Overseas Terminal Hardstands, Phase II	7/91	7/92	\$19.4M	Provide five new hardstands
Honolulu International Airport Energy Monitor. & Con. System, Phase II	12/88	8/92	\$3.7M	Energy monitoring & control system
Honolulu International Airport Public Address System	9/88	11/92	\$2.6M	Phase I
Honolulu International Airport Flight Inform. Display System	12/90	12/93	\$6.6M	Phase II-B
Honolulu International Airport Security System	10/88	12/92	\$11.4M	Airport Security System Phase I
Honolulu International Airport Electrical Dist. System Modernization	2/92	9/92	\$5.5M	Phase I
Honolulu International Airport Air Conditioning System Mod.	8/91	2/93	\$12.1M	Phase I
Honolulu International Airport Interisland Terminal Central Bldg.	12/90	2/93	\$131.2M	Construct new terminal
Honolulu International Airport Makai Pier Phase I & Mauka Pier	2/92	2/93	\$8.3M	Holdrooms, gates & airline operation areas
Honolulu International Airport Ice Machine	5/91	8/92	\$543,848	Modification
Honolulu International Airport S. Ramp General Aviation Improvements	6/91	10/92	\$6.9M	Construct T-Hangars and G.A. building
Honolulu International Airport South Ramp Air Cargo Facility	4/89	5/92	\$8.3M	Site prep for air cargo facilities
Honolulu International Airport Lagoon Drive Exten. Phase III, Unit 1 & 2	3/91	12/92	\$20.3M	Construct aircraft aprons, roads, parking & site prep
Honolulu International Airport S. Ramp ARFF Station #2 Improvements	3/90	3/92	\$2.8M	Construct rescue boat facility, fire pit & storage
Honolulu International Airport Relocation of ARFF Station #1	7/91	4/92	\$3.7M	Construct new fire station
Honolulu International Airport Loading Bridges for Interisland Terminal	11/92	4/93	\$4.1M	Loading bridges for new Interisland Terminal
Honolulu International Airport Loading Bridges for Ewa Concourse Expan.	11/92	3/93	\$2.8M	Loading bridges for gates 31-34
Honolulu International Airport Loading Bridges for New Int'l Terminal	11/91	12/93	\$3.2M	Loading bridges for new Int'l Terminal Bldg.
Honolulu International Airport Mod. to Airline Lounge Areas	9/90	12/91	\$2.3M	Install elevators to airline lounges
Honolulu International Airport Mod. to Baggage Claim Areas	5/88	1/92	\$13.9M	Modernize baggage claim areas 7-17
Honolulu International Airport Pac. Aerospace Museum Exhibits	6/91	8/92	\$1.4M	Acquire exhibits
Honolulu International Airport Mod. to Int'l Arrivals Building	7/89	1/92	\$2.8M	Phase IV-C
Honolulu International Airport Admin. Tower Modification	2/92	6/92	\$34,600	Conceal exposed electrical conduits
Honolulu International Airport Parking Area Improve. & Landscaping	2/92	5/92	\$99,540	Landscaping, sidewalk & ramp, Diamond Head side
Honolulu International Airport Mod. to Gates 12/13 & 24/25	9/88	8/91	\$2.3M	Holding area expansion & restroom improvements
Honolulu International Airport Fire Alarm System	5/87	1/92	\$2.8M	Install fire alarm at Overseas Terminal
Honolulu International Airport Flight Inform. Display System	12/89	11/91	\$1.1M	Phase II-A
Honolulu International Airport Lei Stand Relocation	1/91	7/91	\$1.9M	Relocate lei stands
Honolulu International Airport Interisland Cargo Fac., Phase II	9/90	9/91	\$9.9M	Complete facility construction
Honolulu International Airport Interisland Cargo Fac., Phase III	8/91	2/92	\$2.8M	Realign Kuntz Ave. & provide utility connections
Honolulu International Airport Replacement of Fueling System	8/88	5/92	\$338,000	Install underground fuel tank & dispenser
Statewide Runway & Taxiway Signs	10/90	8/92	\$905,900	Install runway & taxiway signs
Statewide Replacement Loading Bridges	11/91	9/92	\$3.9M	Acquire replacement loading bridges
Keahole Airport Terminal Baggage Claim & Cargo Building Renovations	6/91	5/92	\$1.1M	Renovate baggage claim & cargo building
Keahole Airport Civil Air Patrol Hangar	11/91	4/92	\$220,000	Construct steel fabricated building
Kahului Airport Kalialinui Gulch Improvements	3/90	8/91	\$10.9M	Increase capacity of Kalialianui Gulch
Kahului Airport Runway Safety Area	7/89	10/91	\$11.7M	Construct safety area at south end of Runway 2-20
Kahului Airport Hana Highway Improvements	6/90	10/91	\$7.1M	Widen Hana Highway to four-lane divided highway
Kahului Airport New Terminal Building, Phase I Unit 2	3/91	12/92	\$63.9M	Construct additional holdrooms & baggage claim
Kahului Airport Keolani Place Improvements	2/91	6/92	\$1.4M	Widen Keolani Place to four lanes
Kahului Airport Runway Repair	6/92	11/92	\$2.5M	Repair portions of Runway 2-20, 5-23 & taxiways
Kahului Airport Security System	3/92	10/92	\$777,878	Extend existing system
Lihue Airport Relocation of Taxiway "A"	7/91	4/92	\$3.9M	Reconstruct Taxiway "A"
Lihue Airport U.S. Postal Service Road	9/91	2/92	\$766,312	Construct access road to new post office
Lihue Airport Relocation of Generator Building	12/90	12/91	\$1.7M	Relocate engine generator building

Project	Started	Completed	Cost	Description
Lihue Airport Apron and Lease Lots	7/91	8/92	\$4.2M	Construct commercial aviation apron & lease lots
Lihue Airport Loading Bridges	11/91	9/92	\$3.3M	Replace eight loading bridges
Molokai Airport Maintenance Baseyard	11/91	6/92	\$1.6M	Construct new maintenance building
Molokai Airport Fire Protection System	7/90	12/91	\$458,000	Upgrade water system to ARFF & hydrants
Kalaupapa Airport Repairs & Improvements	6/91	9/92	\$9.2M	Airport, barge wharf & road improvements
Lanai Airport New Cargo Building	4/92	11/92	\$600,000	Construct 4,000-sq. ft. cargo building
Lanai Airport Additional Taxiway & Hardstand Area	3/90	12/92	\$4.9M	Increase apron & taxiway
Honolulu Harbor CY-8 and Pier 51, Sand Island	10/90	9/92	\$5.6M	Construct additional container yard
Honolulu Harbor Piers 19-29 Sewer System Improvements	2/91	8/92	\$821,000	New sewer line, lift station
Honolulu Harbor Pier 29 Shed	5/92	8/92	\$37,000	New women's restroom
Honolulu Harbor Pier 37	1/92	2/92	\$18,000	Electrical repairs
Honolulu Harbor Piers 28 & 29	3/92	6/92	\$170,000	Replace waterline
Honolulu Harbor Pier 51 Container Yard	2/92	6/92	\$770,000	Reconstruct pavement
Honolulu Harbor Fort Armstrong	2/92	9/92	\$125,000	Replace overhead doors
Honolulu Harbor Piers 8-11	9/91	8/92	\$100,000	Remove fuel lines
Honolulu Harbor Pier 39	2/92	4/92	\$42,000	Repair fenders
Honolulu Harbor Piers 29-33	3/92	6/92	\$38,000	Install oil boom hardware
Honolulu Harbor Pier 18	11/91	12/91	\$25,000	Resurface parking lot
Honolulu Harbor Piers 19-20	5/92	9/92	\$310,000	Repair substructure
Honolulu Harbor Pier 60	5/92	6/92	\$23,000	Pave access road
Honolulu Harbor Piers 51-53 Container Yard	7/92	3/93	\$450,000	Repair pavement
Honolulu Harbor Piers 7-11	7/91	9/91	\$55,000	Resurface pavement
Honolulu Harbor Pier 1	9/91	6/92	\$850,000	Repair substructure
Honolulu Harbor Pier 51 Container Yard	11/91	6/92	\$300,000	Resurface pavement
Honolulu Harbor Pier 2	7/91	10/91	\$60,000	Resurface apron
Honolulu Harbor Piers 24-26	10/91	2/92	\$42,000	Repair fender system
Honolulu Harbor Pier 26	10/91	1/92	\$170,000	Repaint shed interior
Barbers Point Harbor	12/91	2/92	\$28,000	Repair barge pier
Ala Wai Boat Harbor	5/91	9/91	\$170,000	Repair floating docks
Haleiwa Boat Harbor	4/91	7/91	\$40,000	Reroof admin. bldg.
Haleiwa Boat Harbor	4/92	6/92	\$45,000	Repair admin. bldg.
Heeia-Kea Boat Harbor	6/91	8/91	\$55,000	Remove debris
Heeia-Kea Boat Harbor	3/92	9/92	\$253,000	Lift station, force main, sewage system
Keehi Boat Harbor	6/91	9/91	\$75,000	Repair catwalks
Keehi Boat Harbor	4/92	10/92	\$459,000	New electrical outlets
Keehi Lagoon Canoe Facility	12/90	8/92	\$2.6M	Judges Pavilion, viewing mounds, parking
Keehi Lagoon Anchorage Area	10/90	9/92	\$1.6M	Remove derelicts & install 360 moorings
Keehi Lagoon Canoe Facility, Phase IA	3/92	7/92	\$1.8M	Dredging canoe raceway, installing sand beach
Kewalo Basin	9/91	11/91	\$94,000	Repair catwalks
Kewalo Basin	11/91	3/92	\$45,000	Repair pier
Restoration of Kuhio Beach	10/91	12/91	\$250,000	Import & redistribute 2,500 cu. yds. sand
Hilo Harbor	2/92	6/92	\$254,000	Repair pavement
Hilo Harbor	5/92	6/92	\$130,000	Repair revetment
Kawaihae Harbor Landside Improvements	10/91	9/92	\$3.8M	Pave & light container yard
Kawaihae Harbor Dredging & Overseas Pier Ext.	3/91	8/92	\$9.6M	550-foot pier extension
Kawaihae Harbor	4/92	7/92	\$35,000	Repaint shed
Kawaihae Boat Harbor	1/92	2/92	\$38,000	Repair loading dock
Kailua-Kona Wharf	11/91	2/92	\$33,000	Repair fender system
Kahului Harbor Container Yard	2/92	3/92	\$20,000	Repair lightpoles
Kahului Harbor Pier 1	3/92	8/92	\$160,000	Repair Substructure
Kahului Harbor Pier 1	7/91	10/91	\$55,000	Repair roof
Kahului Harbor Pier 1	6/92	7/92	\$900,000	Repair pavement
Kahului Harbor Pier 2	11/91	11/91	\$110,000	Repair pavement
Lahaina Boat Harbor	2/92	8/92	\$75,000	Repair electrical system

